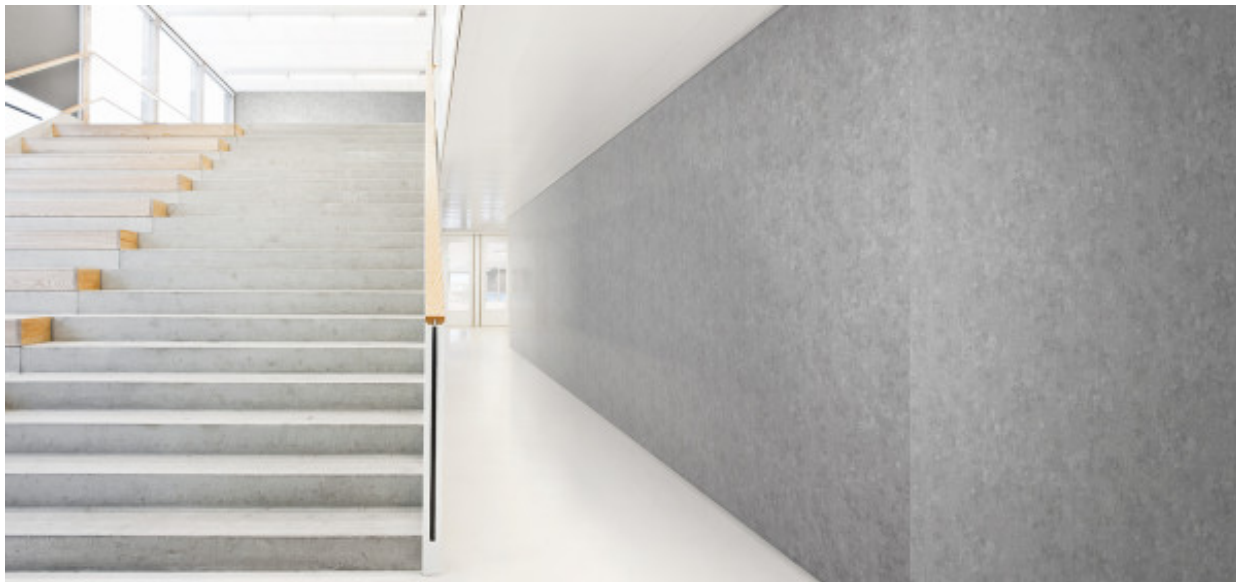


Melvin

1017.01 - 1017.27



Product

Wallcovering

Description

Concrete-look

Composition

100% type II vinyl finishing coat on a scrim/osnaburg backing

Width

± 132-137 cm, ± 52-54 inches

Weight

± 460 gr/m², ± 20 oz/yd¹

Flame retardancy

EN 13501 , B, s1 - d0

ASTM E84 , Pass, A

NFPA 286 , Pass

Labels



USCG -
EU MRA
0038



vinyl ^{plus}
COMMITTED TO
SUSTAINABLE DEVELOPMENT



EN 15102

Melvin

1017.01 - 1017.27



1017.27



1017.01



1017.02



1017.03



1017.04



1017.05



1017.06



1017.07



1017.08



1017.09



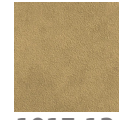
1017.10



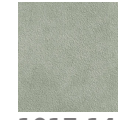
1017.11



1017.12



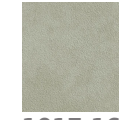
1017.13



1017.14



1017.15



1017.16



1017.17



1017.18



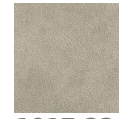
1017.19



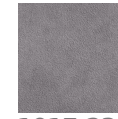
1017.20



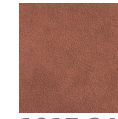
1017.21



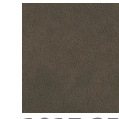
1017.22



1017.23



1017.24



1017.25



1017.26