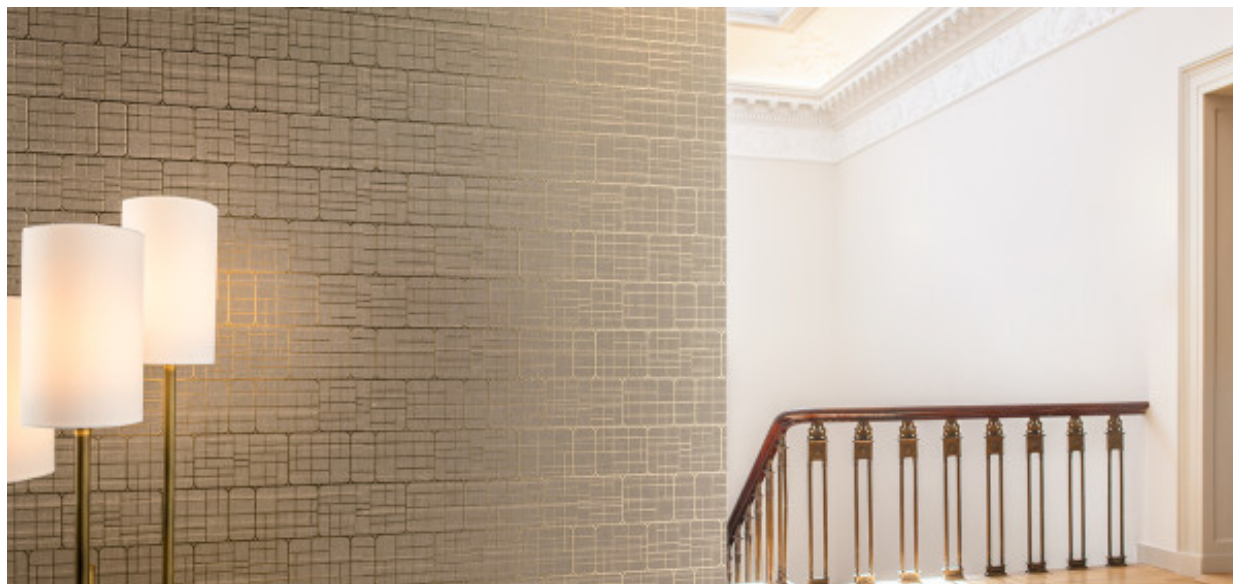


# Mechanica

2615.10 - 2615.19



Produkt

**Okleina ścienna**

Powtórka wzoru szerokość

**34 cm, 13.4 inches**

Opis

**Wzór na bazie konturów prostokątów**

Powtórka wzoru wysokość

**16 cm, 6.3 inches**

Skład

**100% len na nośniku papierowym**

Odporność ogniowa

**EN 13501 , B, s1 - d0  
ASTM E84 , Pass, A**

Szerokość

**± 137 cm, ± 54 inches**

Etykiety

Gramatura

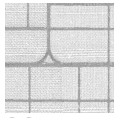
**± 292 gr/m<sup>2</sup>, ± 13 oz/yd<sup>1</sup>**



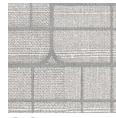
# Mechanica

2615.10 - 2615.19

---



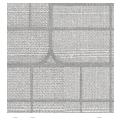
2615.11



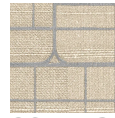
2615.14



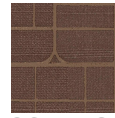
2615.15



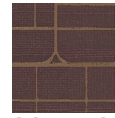
2615.12



2615.13



2615.18



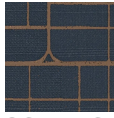
2615.19



2615.10



2615.17



2615.16