

Marmara

8025.01 - 8025.24



Produkt

Tkaniny zasłonowe

Opis

Matowa, gładka tkanina, połyskująca na drugiej stronie; do użytku obustronnego

Skład

100% poliester ognioodporny

Szerokość

± 300 cm, ± 118 inches

Gramatura

± 312 gr/m², ± 10 oz/yd¹

Współczynnik pochłaniania dźwięku

ISO 354, alpha w

0.50 (pleated)

ASTM C423, nrc

0.45

Komfort Wizualny & Termiczny

EN 410/EN 14501

Test available

Odporność ognia

NFPA 701 (meth. 1 or 2) , Pass

EN 13773 , Class 1

BS 5867-2 , Type C

NF P 92/503-507 , M1

DIN 4102 , B1

Übereinstimmung , Pass

UNI VF 8456-8457 , Classe 1

CAN/ULC S109 , Pass

IMO 2010 FTP part 7 , Pass

Odporność na wycieranie

ISO 105-X12

wet 4-5 (scale 1-5) / dry 4-5 (scale 1-5)

AATCC 8 (solids)

wet 5 (scale 1-5) / dry 5 (scale 1-5)

Odporność na działanie światła

ISO 105-B02

5 (scale 1-8)

AATCC 16.2 option 1 or 16.3 opt 3

5 (scale 1-5)

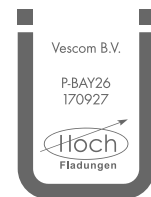
Etykiety



USCG -
EU MRA
0038



STANDARD
100
507-0023
Hohenstein HTTI



Baustoffklasse schwerentflammbar
DIN 4102, B1

Pielęgnacja & Konserwacja



Kurczliwość

Shrinkage 30° warp -0.4% / weft -0.4%

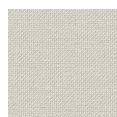
Shrinkage 70° warp -0.4% / weft -0.8%

Marmara

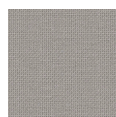
8025.01 - 8025.24



8025.01



8025.02



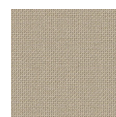
8025.03



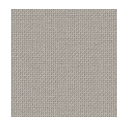
8025.04



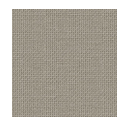
8025.05



8025.06



8025.07



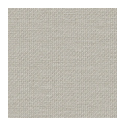
8025.08



8025.09



8025.10



8025.11



8025.12



8025.13



8025.14



8025.15



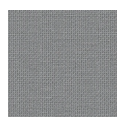
8025.16



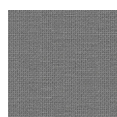
8025.17



8025.18



8025.19



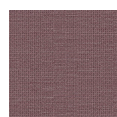
8025.20



8025.21



8025.22



8025.23



8025.24