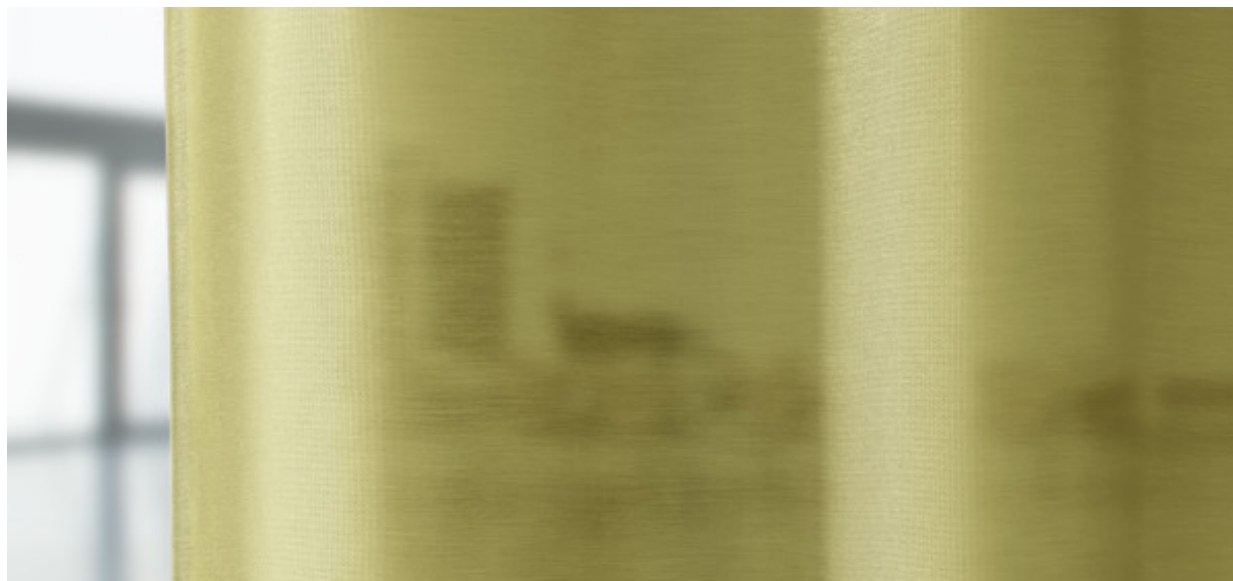


Marmara

8025.01 - 8025.24



Product

Gordijnstoffen

Omschrijving

Matte effen stof met een glanzende achterzijde; tweezijdig te gebruiken

Samenstelling

100% brandvertragend polyester

Breedte

± 300 cm, ± 118 inches

Gewicht

± 312 gr/m², ± 10 oz/yd¹

Geluidsabsorptie

ISO 354, alpha w

0.50 (pleated)

ASTM C423, nrc

0.45

Visueel & Thermisch comfort

EN 410/EN 14501

Test available

Brandwerendheid

NFPA 701 (meth. 1 or 2) , Pass

EN 13773 , Class 1

BS 5867-2 , Type C

NF P 92/503-507 , M1

DIN 4102 , B1

Übereinstimmung , Pass

UNI VF 8456-8457 , Classe 1

CAN/ULC S109 , Pass

IMO 2010 FTP part 7 , Pass

Wrijfechtheid

ISO 105-X12

wet 4-5 (scale 1-5) / dry 4-5 (scale 1-5)

AATCC 8 (solids)

wet 5 (scale 1-5) / dry 5 (scale 1-5)

Lichtechtheid

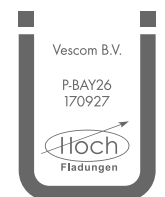
ISO 105-B02

5 (scale 1-8)

AATCC 16.2 option 1 or 16.3 opt 3

5 (scale 1-5)

Keurmerken



Baustoffklasse schwerentflammbar
DIN 4102, B1

Reiniging & Onderhoud



Krimp

Shrinkage 30° - warp -0.4%

Shrinkage 30° - weft -0.4%

Shrinkage 70° - warp -0.4%

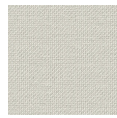
Shrinkage 70° - weft -0.8%

Marmara

8025.01 - 8025.24



8025.01



8025.02



8025.03



8025.04



8025.05



8025.06



8025.07



8025.08



8025.09



8025.10



8025.11



8025.12



8025.13



8025.14



8025.15



8025.16



8025.17



8025.18



8025.19



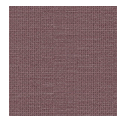
8025.20



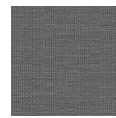
8025.21



8025.22



8025.23



8025.24