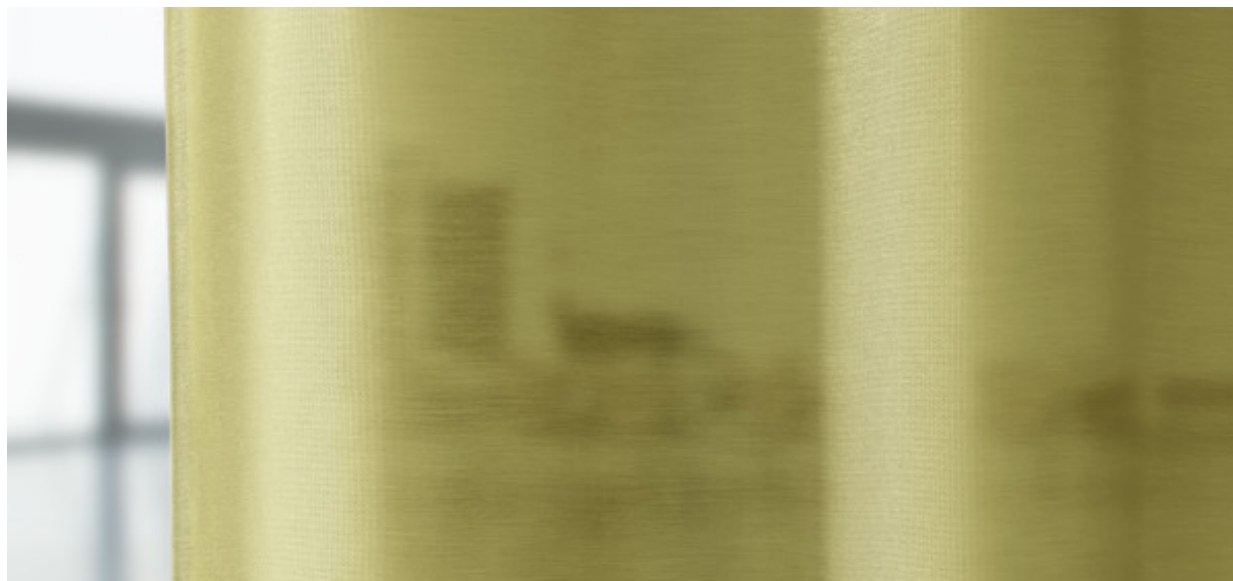


# Marmara

8025.01 - 8025.24



**Product**  
**Curtain**

**Description**  
**Mat unpatterned fabric with a glossy reverse side; can be used on both sides**

**Composition**  
**100% flame retardant polyester**

**Width**  
**± 300 cm, ± 118 inches**

**Weight**  
**± 312 gr/m<sup>2</sup>, ± 10 oz/yd<sup>1</sup>**

**Sound absorption**  
**ISO 354, alpha w**  
0.50 (pleated)  
**ASTM C423, nrc**  
0.45

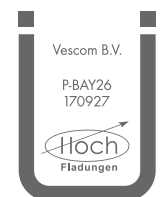
**Visual & Thermal comfort**  
**EN 410/EN 14501**  
Test available

**Flame retardancy**  
**NFPA 701 (meth. 1 or 2) , Pass**  
**EN 13773 , Class 1**  
**BS 5867-2 , Type C**  
**NF P 92/503-507 , M1**  
**DIN 4102 , B1**  
**Übereinstimmung , Pass**  
**UNI VF 8456-8457 , Classe 1**  
**CAN/ULC S109 , Pass**  
**IMO 2010 FTP part 7 , Pass**

**Colorfastness to crocking**  
**ISO 105-X12**  
wet 4-5 (scale 1-5) / dry 4-5 (scale 1-5)  
**AATCC 8 (solids)**  
wet 5 (scale 1-5) / dry 5 (scale 1-5)

**Colorfastness to light**  
**ISO 105-B02**  
5 (scale 1-8)  
**AATCC 16.2 option 1 or 16.3 opt 3**  
5 (scale 1-5)

**Labels**



Baustoffklasse schwerentflammbar  
DIN 4102, B1

**Care & Maintenance**



**Shrinkage**  
Shrinkage 30° - warp -0.4%  
Shrinkage 30° - weft -0.4%  
Shrinkage 70° - warp -0.4%  
Shrinkage 70° - weft -0.8%

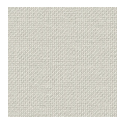
# Marmara

8025.01 - 8025.24

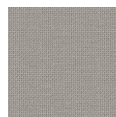
---



8025.01



8025.02



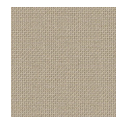
8025.03



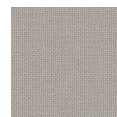
8025.04



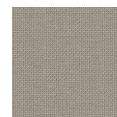
8025.05



8025.06



8025.07



8025.08



8025.09



8025.10



8025.11



8025.12



8025.13



8025.14



8025.15



8025.16



8025.17



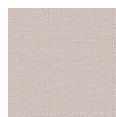
8025.18



8025.19



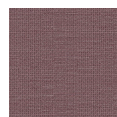
8025.20



8025.21



8025.22



8025.23



8025.24