

Mare

2103.01 – 2103.13



Produkt

Okleina ścienna

Opis

Włókninowa okleina ścienna o organicznym dwukolorowym wzorze i bogatą, ręcznie wykonaną patyną

Skład

70% woodpulp / 30% polyester

Szerokość

± 128 cm, ± 50 inches

Gramatura

± 160 gr/m², ± 7 oz/yd¹

Odporność ogniowa

EN 13501 , B, s1 - d0

ASTM E84 , Pass, A

Odporność na działanie światła

ISO 105-B02

8 (scale 1-8)

AATCC 16.2 opt. 1 or 3 / FTM 191A, meth. 5660

5 (scale 1-5)

Etykiety



Mare

2103.01 – 2103.13



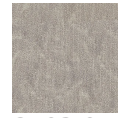
2103.01



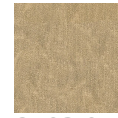
2103.02



2103.03



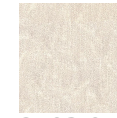
2103.04



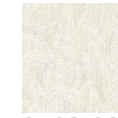
2103.05



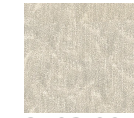
2103.06



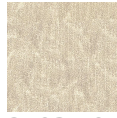
2103.07



2103.08



2103.09



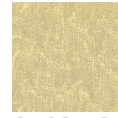
2103.10



2103.11



2103.12



2103.13