

Mare

2103.01 – 2103.13



Produkt

Wandbekleidung

Beschreibung

Vliestapete mit einem organischen, zweifarbigen Muster und handwerklich anmutender Patina

Zusammensetzung

70% woodpulp / 30% polyester

Breite

± 128 cm, ± 50 inches

Gewicht

± 160 gr/m², ± 7 oz/yd¹

Brandschutzklasse

EN 13501 , B, s1 - d0

ASTM E84 , Pass, A

Lichtechtheit

ISO 105-B02

8 (scale 1-8)

AATCC 16.2 opt. 1 or 3 / FTM 191A, meth. 5660

5 (scale 1-5)

Labels



Mare

2103.01 – 2103.13



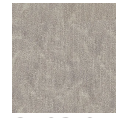
2103.01



2103.02



2103.03



2103.04



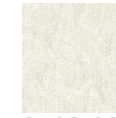
2103.05



2103.06



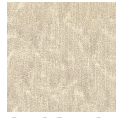
2103.07



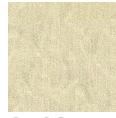
2103.08



2103.09



2103.10



2103.11



2103.12



2103.13