

# Malta

7037.01 - 7037.21



## Product

### Upholstery

## Description

**Light spots on a dark font**

## Composition

**Vinyl coat, cotton/polyester backing**

## Width

**± 137-140 cm, ± 54-55 inches**

## Weight

**± 800 gr/m<sup>2</sup>, ± 36 oz/yd<sup>2</sup>**

## Flame retardancy

**EN 1021/1-2 , Pass**

**BS 5852 , Crib 5**

**NF P 92/503-507 or NF D 60-013 , M2**

**DIN 4102 , B2**

**Cal TB 117-2013, section 1 , Pass**

**IMO 2010 FTP part 8 , Pass**

**NFPA 260 , Class 1**

## Colorfastness to crocking

**ISO 105 X12**

wet 5 (scale 1-5) / dry 5 (scale 1-5)

**AATCC 8**

wet 5 (scale 1-5) / dry 5 (scale 1-5)

## Colorfastness to light

**ISO 105 B02**

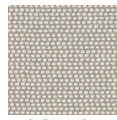
7 (scale 1-8)

## Labels

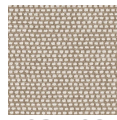


# Malta

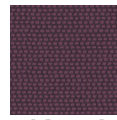
7037.01 - 7037.21



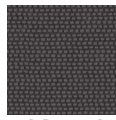
7037.01



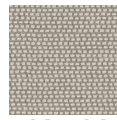
7037.02



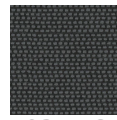
7037.12



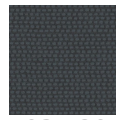
7037.10



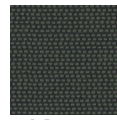
7037.06



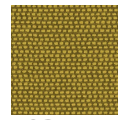
7037.18



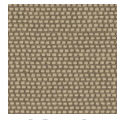
7037.20



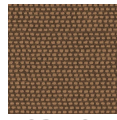
7037.17



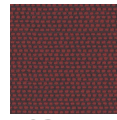
7037.14



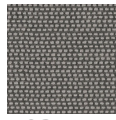
7037.04



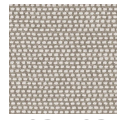
7037.05



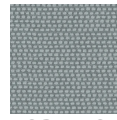
7037.11



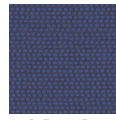
7037.15



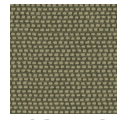
7037.03



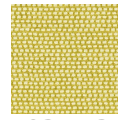
7037.19



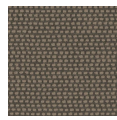
7037.21



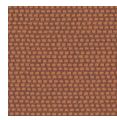
7037.16



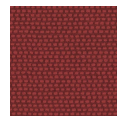
7037.13



7037.07



7037.08



7037.09