

Madhura

2623.80 – 2623.93



Produkt

Okleina ścienna

Opis

Tkana okleina ścienna z jedwabnego melanżu z celowymi nieregularnościami i wyraźniejszym poziomym efektem przędzy w jasnych pastelowych odcieniach

Skład

85% silk / 15% recycled polyester on a paper backing

Szerokość

± 110 cm, ± 43 inches

Gramatura

± 232 gr/m², ± 8 oz/yd¹

Odporność ogniowa

EN 13501 , B, s1 - d0

ASTM E84 , Pass, A

Odporność na działanie światła

ISO 105-B02

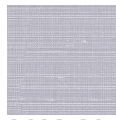
7 (scale 1-8)

Etykiety



Madhura

2623.80 – 2623.93



2623.80



2623.81



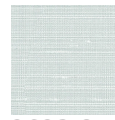
2623.82



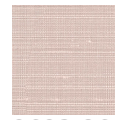
2623.83



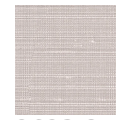
2623.84



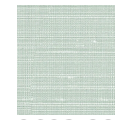
2623.85



2623.86



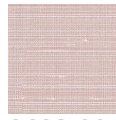
2623.87



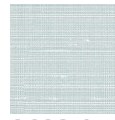
2623.88



2623.89



2623.90



2623.91



2623.92



2623.93