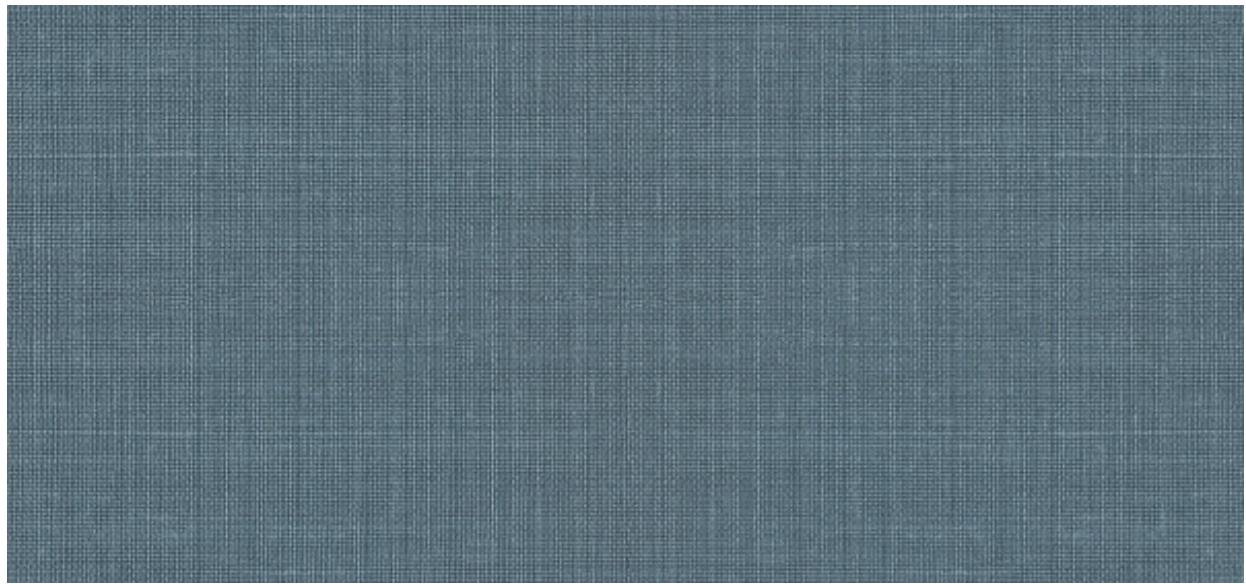


Luxolin

2620.10 – 2620.19



Prodotto

Rivestimenti murali

Descrizione

Struttura irregolare in lino ad effetto fiammato e tonalità naturali

Composizione

100% lino su un supporto in carta

Larghezza

± 137 cm, ± 54 inches

Peso

± 518 gr/m², ± 23 oz/yd¹

Resistenza al fuoco

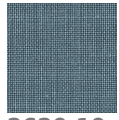
**EN 13501 , B, s1 - d0
ASTM E84 , Pass, A**

Etichette

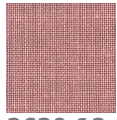


Luxolin

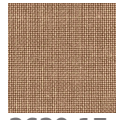
2620.10 – 2620.19



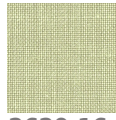
2620.19



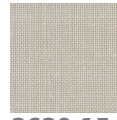
2620.18



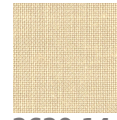
2620.17



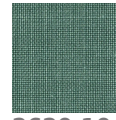
2620.16



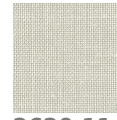
2620.15



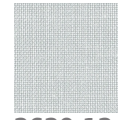
2620.14



2620.10



2620.11



2620.12



2620.13