

Linen

2547.01 - 2547.10



Produkt

Okleina ścienna

Opis

Struktura lnu na całej powierzchni

Skład

100% ifr xorel® (polietylen) na nośniku papierowym x-protect wall™

Szerokość

± 132 cm, ± 52 inches

Gramatura

± 388 gr/m², ± 17 oz/yd¹

Odporność ogniowa

EN 13501 , B, s1 - d0

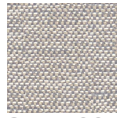
ASTM E84 , Pass, A

Etykiety

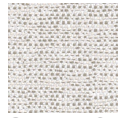


Linen

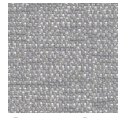
2547.01 - 2547.10



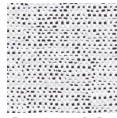
2547.09



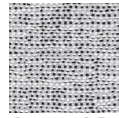
2547.10



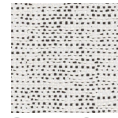
2547.01



2547.02



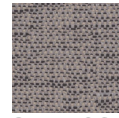
2547.03



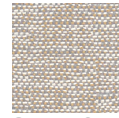
2547.04



2547.05



2547.06



2547.07