

Linen

2547.01 - 2547.10



Producto

Revestimiento mural

Descripción

Estructura integral de lino

Composición

**100% ifr xorel® (polietileno) en x-protect wall™
(respaldo en papel)**

Anchura

± 132 cm, ± 52 inches

Peso

± 388 gr/m², ± 17 oz/yd¹

Combustión retardada

EN 13501 , B, s1 - d0

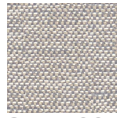
ASTM E84 , Pass, A

Etiquetas

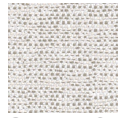


Linen

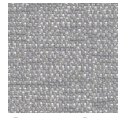
2547.01 - 2547.10



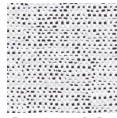
2547.09



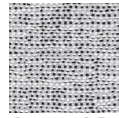
2547.10



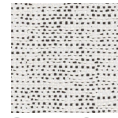
2547.01



2547.02



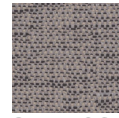
2547.03



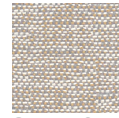
2547.04



2547.05



2547.06



2547.07