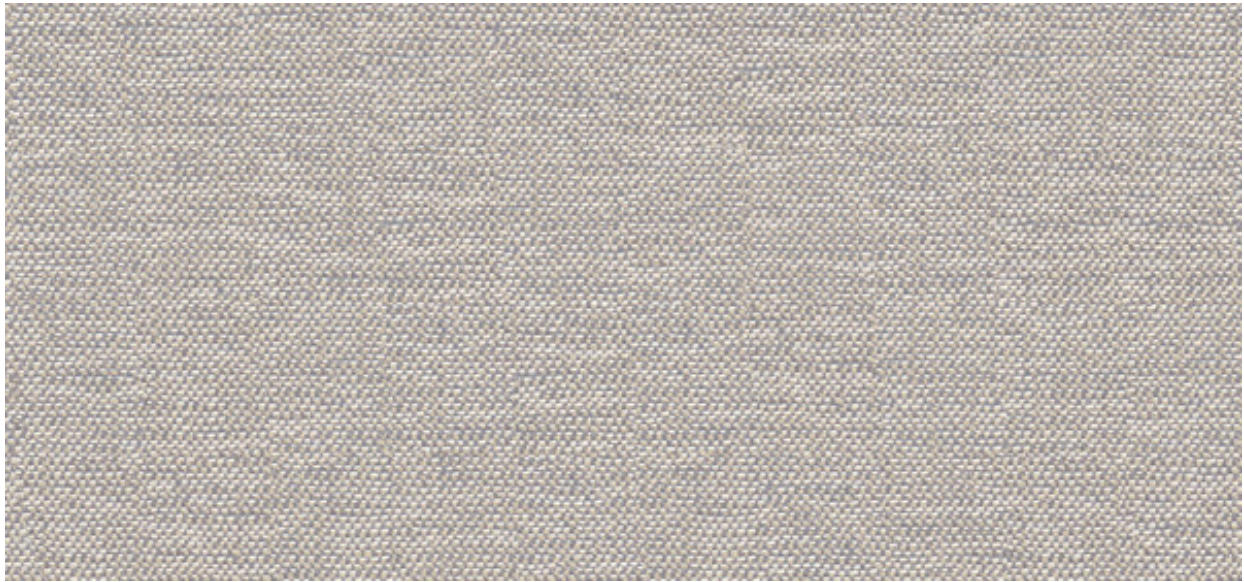


Linen

2547.01 - 2547.10



Produkt

Wandbekleidung

Beschreibung

Flächendeckende Leinenstruktur

Zusammensetzung

100% IFR Xorel® (Polyethylen) auf x-protect wall™ (Papierrücken)

Breite

± 132 cm, ± 52 inches

Gewicht

± 388 gr/m², ± 17 oz/yd¹

Brandschutzklasse

EN 13501 , B, s1 - d0

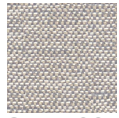
ASTM E84 , Pass, A

Labels

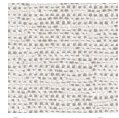


Linen

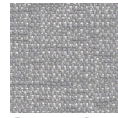
2547.01 - 2547.10



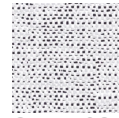
2547.09



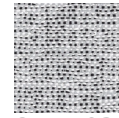
2547.10



2547.01



2547.02



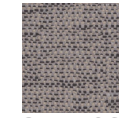
2547.03



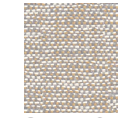
2547.04



2547.05



2547.06



2547.07