

Lamu

7051.01 - 7051.30



Product

Upholstery

Description

Structured felted wool quality

Composition

75% post-consumer recycled wool / 25% polyester

Width

± 150 cm, ± 59 inches

Weight

± 660 gr/m², ± 21 oz/yd¹

Flame retardancy

EN 1021/1-2 , Pass

BS 5852 , Crib 5

NF P 92/503-507 or NF D 60-013 , M2

DIN 4102 , B2

Cal TB 117-2013, section 1 , Pass

IMO 2010 FTP part 8 , Pass

NFPA 260 , Class 1

Colorfastness to crocking

ISO 105 X12

wet 5 (scale 1-5) / dry 5 (scale 1-5)

AATCC 8

wet 5 (scale 1-5) / dry 5 (scale 1-5)

Colorfastness to light

ISO 105 B02

5 (scale 1-8)

AATCC 16.2 opt.1 or 16.3 opt. 3

5 (scale 1-5)

Seam slippage

ISO 13936-2

warp 3.5 mm / weft 3.5 mm

ASTM D4034

warp 26 lbf / weft 26 lbf

Labels



USCG -
EU MRA
0038



STANDARD
100
519-3058
Hohenstein HTTI

Care & Maintenance



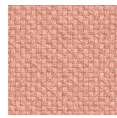
Shrinkage

Lamu

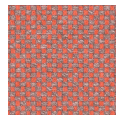
7051.01 - 7051.30



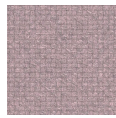
7051.01



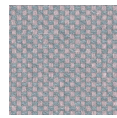
7051.02



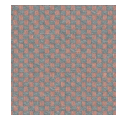
7051.03



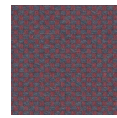
7051.04



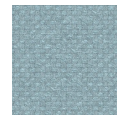
7051.05



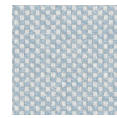
7051.06



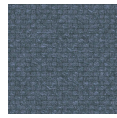
7051.07



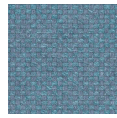
7051.08



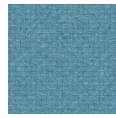
7051.09



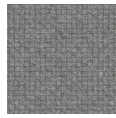
7051.10



7051.11



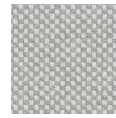
7051.12



7051.13



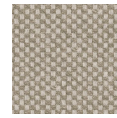
7051.14



7051.15



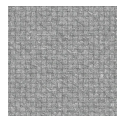
7051.16



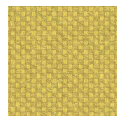
7051.17



7051.18



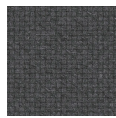
7051.19



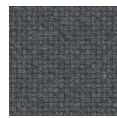
7051.20



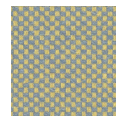
7051.21



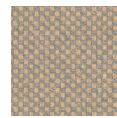
7051.22



7051.23



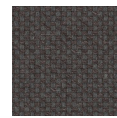
7051.24



7051.25



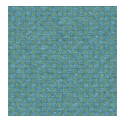
7051.26



7051.27



7051.28



7051.29



7051.30