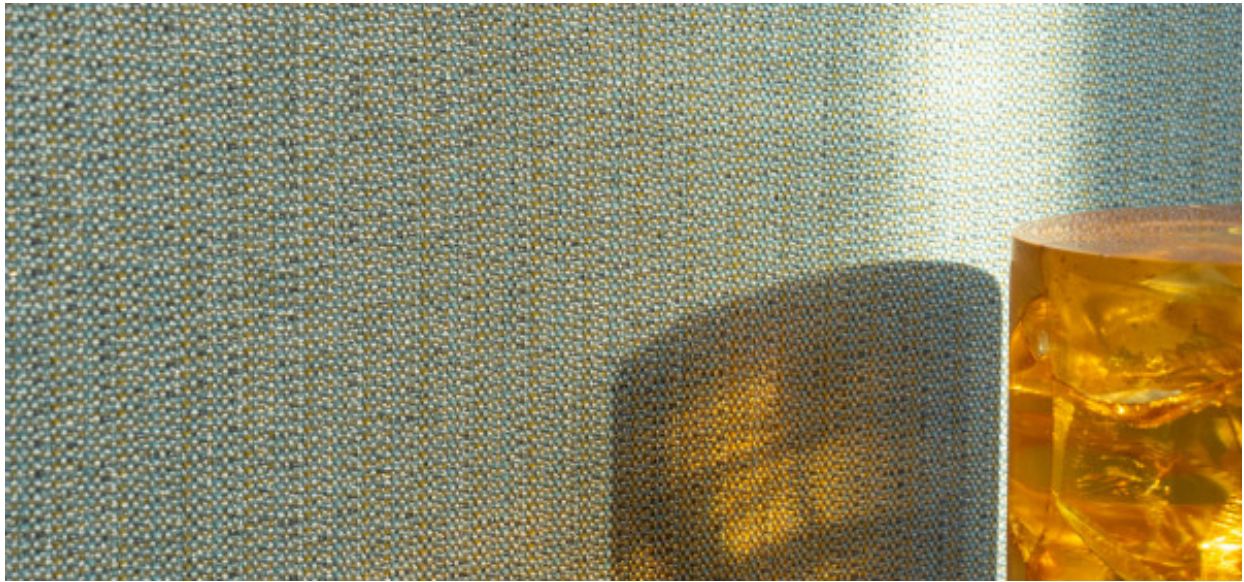


Jewel

2110.01 – 2110.13



Produkt
Okleina ścienna

Opis
Wielobarwna okleina ścienna z przędzy z taśmy polietylenowej z zawartością materiałów pochodzących z recyklingu pokonsumenckiego, z efektem pionowych, nieregularnych pasków

Skład
82% polyethylene / 18% recycled polyester on a non-woven backing

Szerokość
± 134 cm, ± 53 inches

Gramatura
± 310 gr/m², ± 13 oz/yd¹

Odporność ogniowa
EN 13501 , B, s1 - d0

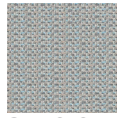
Odporność na działanie światła
ISO 105-B02
8 (scale 1-8)
AATCC 16.2 opt. 1 or 3 / FTM 191A, meth. 5660
5 (scale 1-5)

Etykiety

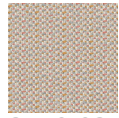


Jewel

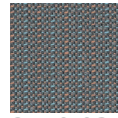
2110.01 – 2110.13



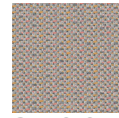
2110.01



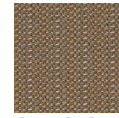
2110.02



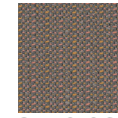
2110.03



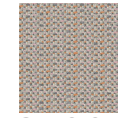
2110.04



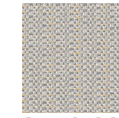
2110.05



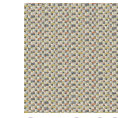
2110.06



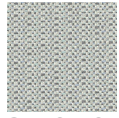
2110.07



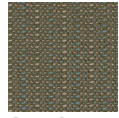
2110.08



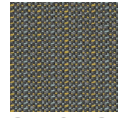
2110.09



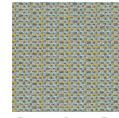
2110.10



2110.11



2110.12



2110.13