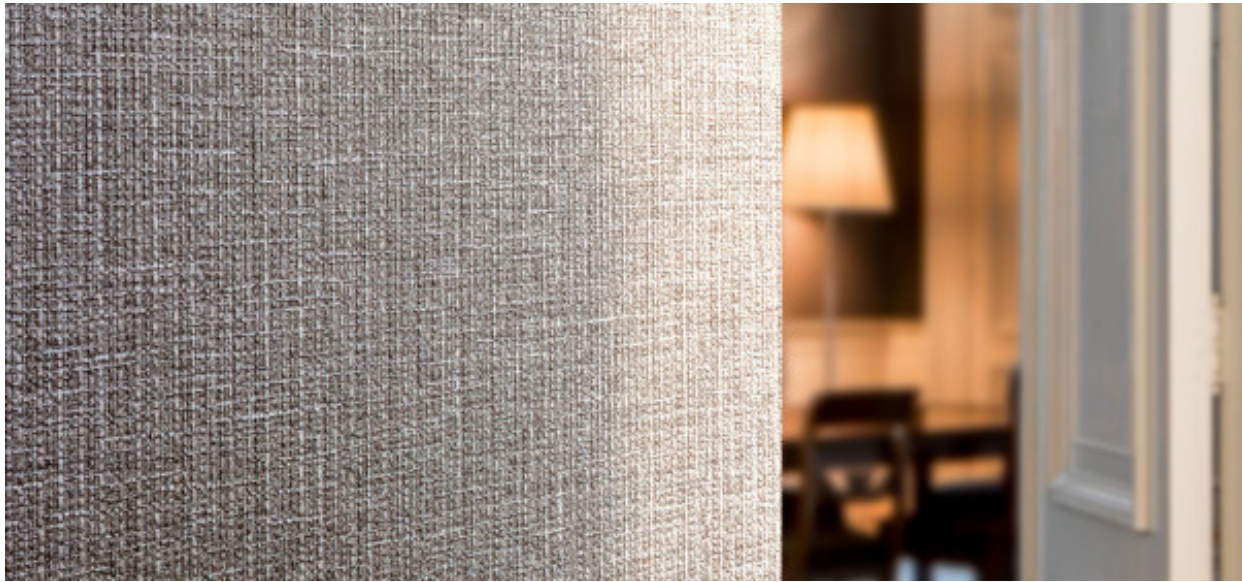


# Jarvis

1096.01 - 1096.21



## Produto

**Revestimento mural**

## Descrição

**Rico e elegante têxtil metalizado**

## Composição

**Camada vinílica estampada com tintas à base de água e base de algodão**

## Largura

**± 130 cm, ± 51 inches**

## Peso

**± 440 gr/m<sup>2</sup>, ± 18 oz/yd<sup>1</sup>**

## Resistência ao fogo

**EN 13501 , B, s2 - d0  
ASTM E84 , Pass, A**

## Resistência à luz

**ISO 105-B02  
Light 7 / dark 7 (scale 1-8)**

## Marcas de qualidade



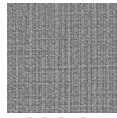
**vinyl** plus  
COMMITTED TO SUSTAINABLE DEVELOPMENT

**CE** EN 15102

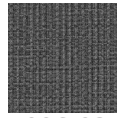
# Jarvis

1096.01 - 1096.21

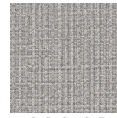
---



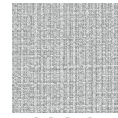
1096.01



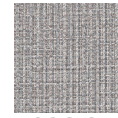
1096.02



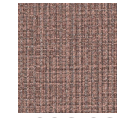
1096.03



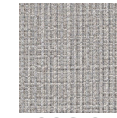
1096.04



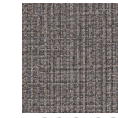
1096.05



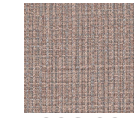
1096.06



1096.07



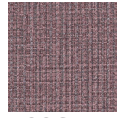
1096.08



1096.09



1096.10



1096.11



1096.12



1096.13



1096.14



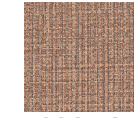
1096.15



1096.16



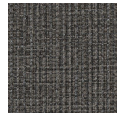
1096.17



1096.18



1096.19



1096.20



1096.21