

Jarvis

1096.01 - 1096.21



Producto

Revestimiento mural

Descripción

Tejido rico en un tono metálico chic

Composición

**Capa vinílica estampada con tintas al agua,
sobre soporte de algodón**

Anchura

± 130 cm, ± 51 inches

Peso

± 440 gr/m², ± 18 oz/yd¹

Combustión retardada

**EN 13501 , B, s2 - d0
ASTM E84 , Pass, A**

Insensibilidad a la luz

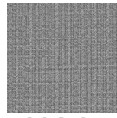
**ISO 105-B02
Light 7 / dark 7 (scale 1-8)**

Etiquetas

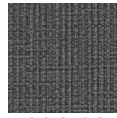


Jarvis

1096.01 - 1096.21



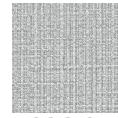
1096.01



1096.02



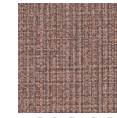
1096.03



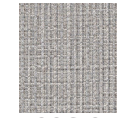
1096.04



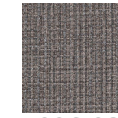
1096.05



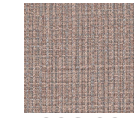
1096.06



1096.07



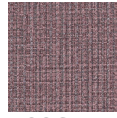
1096.08



1096.09



1096.10



1096.11



1096.12



1096.13



1096.14



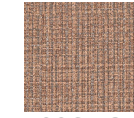
1096.15



1096.16



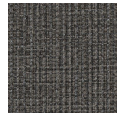
1096.17



1096.18



1096.19



1096.20



1096.21