

Heather

8091.01 - 8091.18



产品
窗帘

描述

色调清新的垂直提花织造窗帘面料

成分

56% polyester FR / 44% recycled polyester FR

宽幅

± 145 cm, ± 57 inches

重量

± 289 gr/m, ± 9 oz/yd¹

阻燃

NFPA 701 (meth. 1 or 2) , Pass

EN 13773 , Class 1

BS 5867-2 , Type C

NF P 92/503-507 , M1

DIN 4102 , B1

Übereinstimmung , Pass

UNI VF 8456-8457 , Classe 1

CAN/ULC S109 , Pass

耐摩擦褪色

ISO 105-X12

wet 4-5 (scale 1-5) / dry 4-5 (scale 1-5)

AATCC 8 (solids)

wet 5 (scale 1-5) / dry 5 (scale 1-5)

耐光照褪色

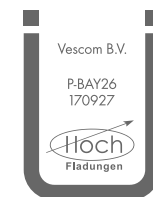
ISO 105-B02

6 (scale 1-8)

AATCC 16.2 option 1 or 16.3 opt 3

5 (scale 1-5)

标签



Baustoffklasse schwerentflammbar
DIN 4102, B1

保养与维护



收缩率

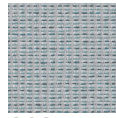
Shrinkage 70° warp -1% / weft -1.2%

Heather

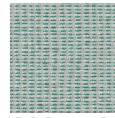
8091.01 - 8091.18



8091.18



8091.17



8091.16



8091.15



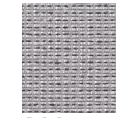
8091.13



8091.12



8091.10



8091.11



8091.08



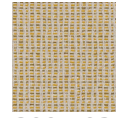
8091.07



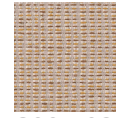
8091.06



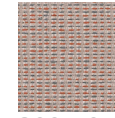
8091.05



8091.03



8091.02



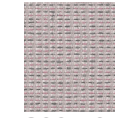
8091.01



8091.14



8091.09



8091.04