

# Harding

7070.01 – 7070.08



## Produto

**Revestimento para mobiliário**

## Descrição

**Tecido de revestimento para mobiliário em sarja de dois tons, feito a partir de resíduos de plástico 100% reciclado**

## Composição

**100% recycled polyester FR**

## Largura

**± 151 cm, ± 59 inches**

## Peso

**± 660 gr/m, ± 21 oz/yd<sup>1</sup>**

## Resistência ao fogo

**EN 1021/1-2 , Pass**

**BS 5852 , Crib 5**

**DIN 4102 , B1**

**Cal TB 117-2013, section 1 , Pass**

**IMO 2010 FTP part 8 , Pass**

**NFPA 260 , Class 1**

## Resistência à fricção

**ISO 105 X12**

wet 4-5 (scale 1-5) / dry 4-5 (scale 1-5)

## Resistência à luz

**ISO 105 B02**

6 (scale 1-8)

## Resistência ao deslizamento das costuras

**ISO 13936-2**

warp 3 mm / weft 2 mm

## Marcas de qualidade



USCG -  
EU MRA  
0038



STANDARD  
100  
521-3365  
Hohenstein HTTI

## Cuidados & Manutenção



## Encolhimento

Shrinkage 70° warp -2% / weft -2%

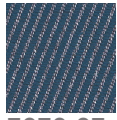
# Harding

7070.01 – 7070.08

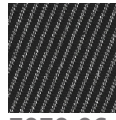
---



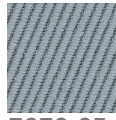
7070.08



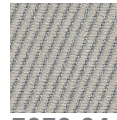
7070.07



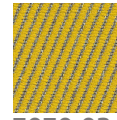
7070.06



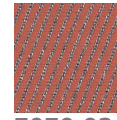
7070.05



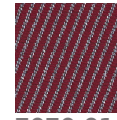
7070.04



7070.03



7070.02



7070.01