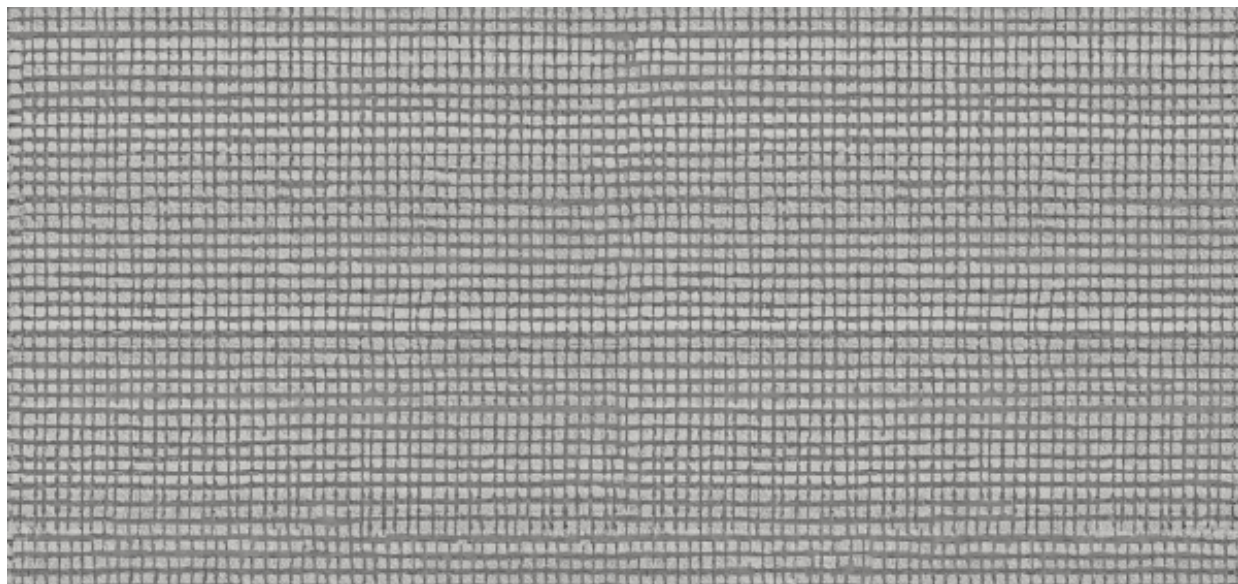


Grandessa

2617.70 - 2617.79



Prodotto

Rivestimenti murali

Descrizione

Struttura a rete con strisce orizzontali sfumate

Composizione

70% pasta di legno / 30% poliestere su un supporto in carta

Larghezza

± 137 cm, ± 54 inches

Peso

± 219 gr/m², ± 10 oz/yd¹

Resistenza al fuoco

EN 13501 , B, s2 - d0

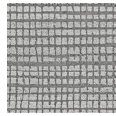
ASTM E84 , Pass, A

Etichette



Grandessa

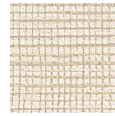
2617.70 - 2617.79



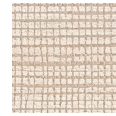
2617.70



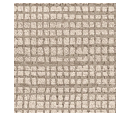
2617.71



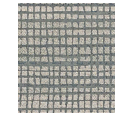
2617.72



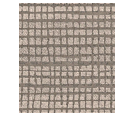
2617.73



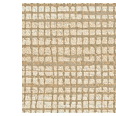
2617.74



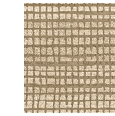
2617.75



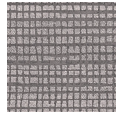
2617.76



2617.77



2617.78



2617.79