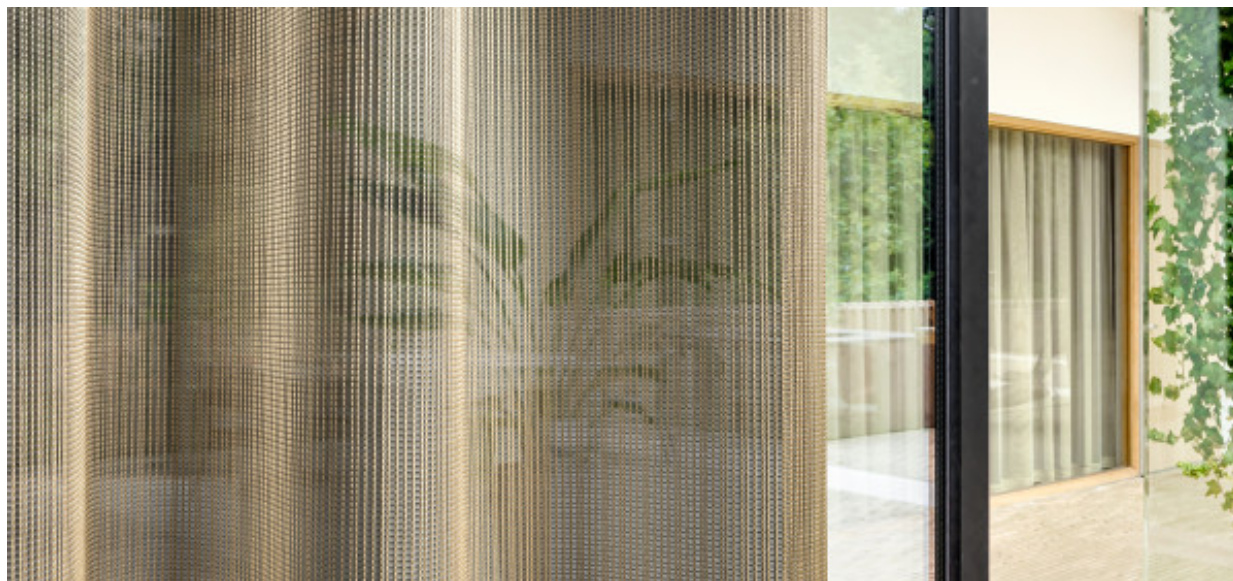


# Fogo

8051.01 - 8051.16



## Produto

**Cortina**

## Descrição

**Semitransparente com efeito no comprimento**

## Composição

**69% recycled polyester FR / 31% polyester FR**

## Largura

**± 304 cm, ± 120 inches**

## Peso

**± 237 gr/m, ± 8 oz/yd<sup>1</sup>**

## Conforto Visual & Térmico

**EN 410/EN 14501**

Test available

## Resistência ao fogo

**NFPA 701 (meth. 1 or 2) , Pass**

**EN 13773 , Class 1**

**BS 5867-2 , Type C**

**NF P 92/503-507 , M1**

**DIN 4102 , B1**

**Übereinstimmung , Pass**

**UNI VF 8456-8457 , Classe 1**

**CAN/ULC S109 , Pass**

**IMO 2010 FTP part 7 , Pass**

## Resistência à fricção

**ISO 105-X12**

wet 4-5 (scale 1-5) / dry 4-5 (scale 1-5)

**AATCC 8 (solids)**

wet 5 (scale 1-5) / dry 5 (scale 1-5)

## Resistência à luz

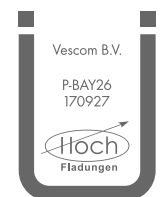
**ISO 105-B02**

6 (scale 1-8)

**AATCC 16.2 option 1 or 16.3 opt 3**

5 (scale 1-5)

## Marcas de qualidade



Baustoffklasse schwerentflammbar  
DIN 4102, B1

## Cuidados & Manutenção



## Encolhimento

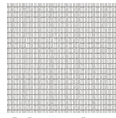
Shrinkage 30° warp -3.1% / weft -0.5%

Shrinkage 70° warp -3.8% / weft -0.8%

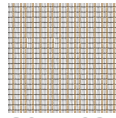
# Fogo

8051.01 - 8051.16

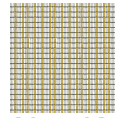
---



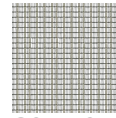
8051.01



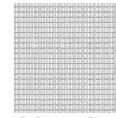
8051.02



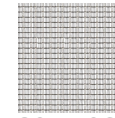
8051.03



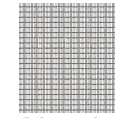
8051.04



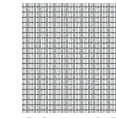
8051.05



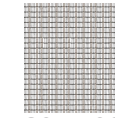
8051.06



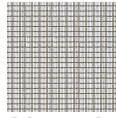
8051.07



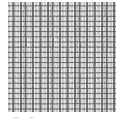
8051.08



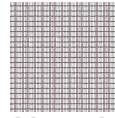
8051.09



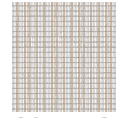
8051.10



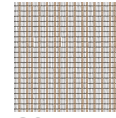
8051.11



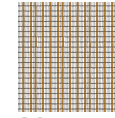
8051.12



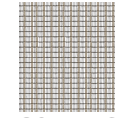
8051.13



8051.14



8051.15



8051.16