

Flux

2539.01 - 2539.11



Prodotto
Rivestimenti murali

Descrizione
Tessuto semi-uni con un vago effetto di larghezza

Composizione
100% ifr xorel (polietilene)

Larghezza
± 132 cm, ± 52 inches

Peso
± 280 gr/m², ± 12 oz/yd¹

Resistenza al fuoco
EN 13501 , B, s1 - d0
ASTM E84 , Pass, A

Etichette

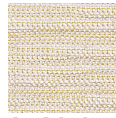


Flux

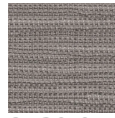
2539.01 - 2539.11



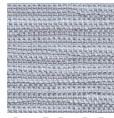
2539.01



2539.05



2539.07



2539.06



2539.09



2539.11



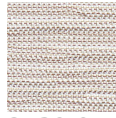
2539.10



2539.08



2539.02



2539.04