

Flux

2539.01 - 2539.11



Producto

Revestimiento mural

Descripción

Tejido semiliso con cierto efecto de ancho

Composición

100% ifr xorel (polietileno)

Anchura

± 132 cm, ± 52 inches

Peso

± 280 gr/m², ± 12 oz/yd¹

Combustión retardada

EN 13501 , B, s1 - d0

ASTM E84 , Pass, A

Etiquetas

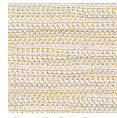


Flux

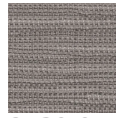
2539.01 - 2539.11



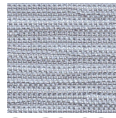
2539.01



2539.05



2539.07



2539.06



2539.09



2539.11



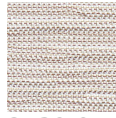
2539.10



2539.08



2539.02



2539.04