

Flux

2539.01 - 2539.11



Product

Wallcovering

Description

Semi-uni fabric with faint width effect

Composition

100% ifr xorel (polyethylene)

Width

± 132 cm, ± 52 inches

Weight

± 280 gr/m², ± 12 oz/yd¹

Flame retardancy

EN 13501 , B, s1 - d0

ASTM E84 , Pass, A

Labels

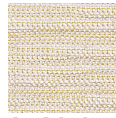


Flux

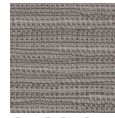
2539.01 - 2539.11



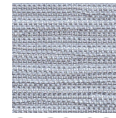
2539.01



2539.05



2539.07



2539.06



2539.09



2539.11



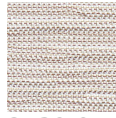
2539.10



2539.08



2539.02



2539.04