

Flux

2539.01 - 2539.11



Produkt

Wandbekleidung

Beschreibung

Semi-uni Gewebe mit leichtem Breite-Effekt

Zusammensetzung

100% ifr xorel (Polyethylen)

Breite

± 132 cm, ± 52 inches

Gewicht

± 280 gr/m², ± 12 oz/yd¹

Brandschutzklasse

EN 13501 , B, s1 - d0

ASTM E84 , Pass, A

Labels

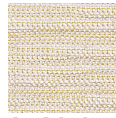


Flux

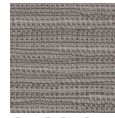
2539.01 - 2539.11



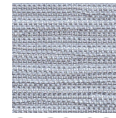
2539.01



2539.05



2539.07



2539.06



2539.09



2539.11



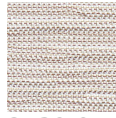
2539.10



2539.08



2539.02



2539.04