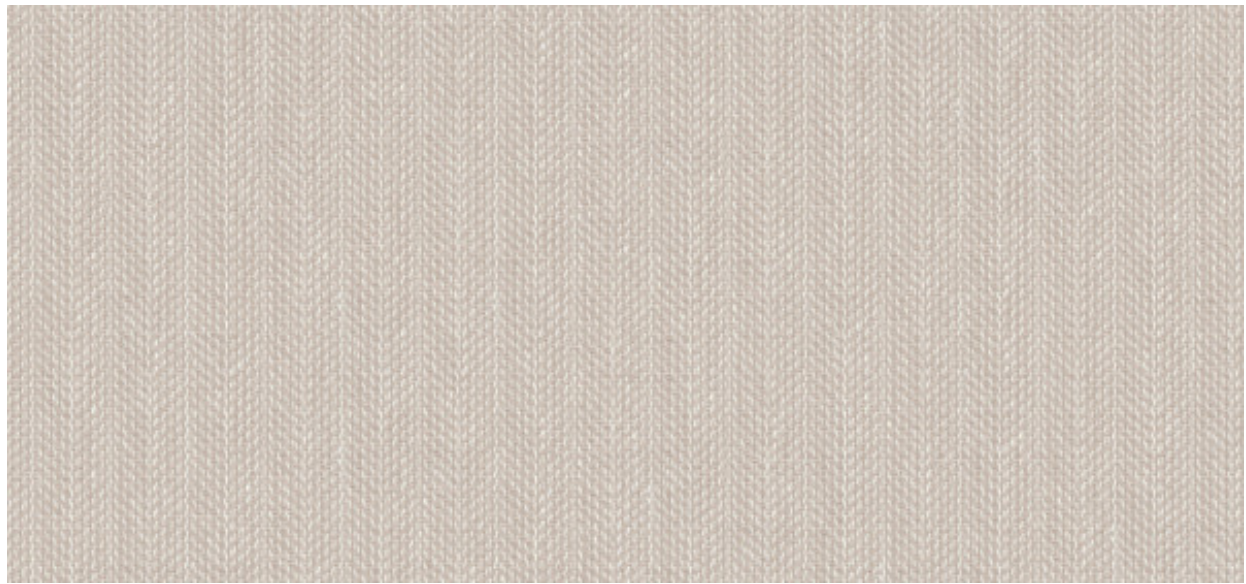


Evian

2615.80 - 2615.84



Producto

Revestimiento mural

Peso

± 453 gr/m², ± 20 oz/yd¹

Descripción

Lino de espiguilla

Combustión retardada

EN 13501 , B, s1 - d0

ASTM E84 , Pass, A

Composición

100% lino en soporte de papel

Etiquetas

Anchura

± 137 cm, ± 54 inches

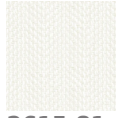


Evian

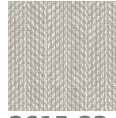
2615.80 - 2615.84



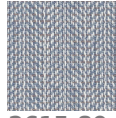
2615.82



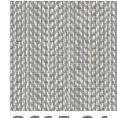
2615.81



2615.83



2615.80



2615.84