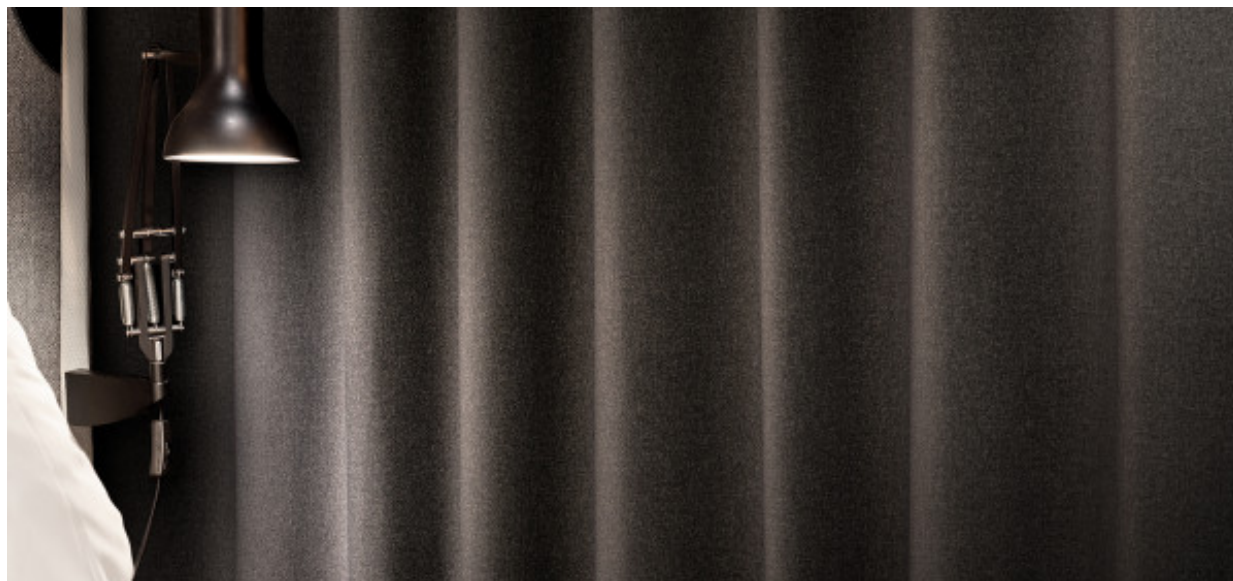


Elba

8069.01 - 8069.20



Product

Gordijnstoffen

Omschrijving

Black out met gerasterde melange look

Samenstelling

100% flame retardant polyester acrylic coating

Breedte

± 277 cm, ± 109 inches

Gewicht

± 1075 gr/m, ± 35 oz/yd¹

Geluidsabsorptie

ISO 354, alpha w

0.35

Visueel & Thermisch comfort

EN 410/EN 14501

Test available

AATCC 148

Test available

Brandwerendheid

NFPA 701 (meth. 1 or 2) , Pass

EN 13773 , Class 1

BS 5867-2 , Type B

DIN 4102 , B1

Übereinstimmung , Pass

UNI VF 8456-8457 , Classe 1

CAN/ULC S109 , Pass

IMO 2010 FTP part 7 , Pass

Wrijfechtheid

ISO 105-X12

wet 4-5 (scale 1-5) / dry 4-5 (scale 1-5)

AATCC 8 (solids)

wet 5 (scale 1-5) / dry 5 (scale 1-5)

Lichtechtheid

ISO 105-B02

5 (scale 1-8)

AATCC 16.2 option 1 or 16.3 opt 3

2.5 (scale 1-5)

Naadschuifweerstand

ASTM D434

warp 44 lbs / weft 49.5 lbs

Keurmerken



USCG -
EU MRA
0038



Boustoffklasse schwerentflammbar
DIN 4102, B1

Reiniging & Onderhoud



Krimp

Shrinkage 30° warp -0.9% / weft -0.6%

Shrinkage 70° warp -1.5% / weft -1.2%

Elba

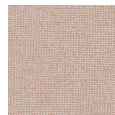
8069.01 - 8069.20



8069.04



8069.05



8069.06



8069.07



8069.08



8069.09



8069.10



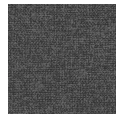
8069.11



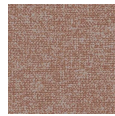
8069.12



8069.13



8069.14



8069.15



8069.16



8069.17



8069.18



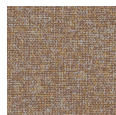
8069.19



8069.20



8069.01



8069.02



8069.03