

Elba

8069.01 - 8069.20



Prodotto

Tessuti per tende

Descrizione

Tessuto per tende oscuranti black-out effetto melange

Composizione

100% flame retardant polyester acrylic coating

Larghezza

± 277 cm, ± 109 inches

Peso

± 1075 gr/m, ± 35 oz/yd¹

Assorbimento del suono

ISO 354, alpha w

0.35

Comfort Visivo & Termico

EN 410/EN 14501

Test available

AATCC 148

Test available

Resistenza al fuoco

NFPA 701 (meth. 1 or 2) , Pass

EN 13773 , Class 1

BS 5867-2 , Type B

DIN 4102 , B1

Übereinstimmung , Pass

UNI VF 8456-8457 , Classe 1

CAN/ULC S109 , Pass

IMO 2010 FTP part 7 , Pass

Solidità allo sfregamento

ISO 105-X12

wet 4-5 (scale 1-5) / dry 4-5 (scale 1-5)

AATCC 8 (solids)

wet 5 (scale 1-5) / dry 5 (scale 1-5)

Resistenza alla luce

ISO 105-B02

5 (scale 1-8)

AATCC 16.2 option 1 or 16.3 opt 3

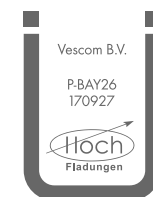
2.5 (scale 1-5)

Resistenza al taglio cucitura

ASTM D434

warp 44 lbs / weft 49.5 lbs

Etichette



Baustoffklasse schwerentflammbar
DIN 4102, B1

Cura & Manutenzione



Restringimento

Shrinkage 30° warp -0.9% / weft -0.6%

Shrinkage 70° warp -1.5% / weft -1.2%

Elba

8069.01 - 8069.20



8069.04



8069.05



8069.06



8069.07



8069.08



8069.09



8069.10



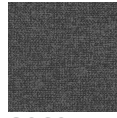
8069.11



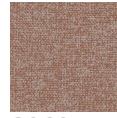
8069.12



8069.13



8069.14



8069.15



8069.16



8069.17



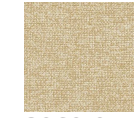
8069.18



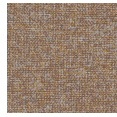
8069.19



8069.20



8069.01



8069.02



8069.03