

Elba

8069.01 - 8069.20



product
Curtain

description
Structured melange look curtain fabric, black out

composition
100% flame retardant polyester acrylic coating

width
± 277 cm, ± 109 inches

weight
± 1075 gr/m², ± 35 oz/yd¹

sound absorption
ISO 354, alpha w
0.35

visual & thermal comfort
EN 410/EN 14501
Test available
AATCC 148
Test available

flame retardant
NFPA 701 (meth. 1 or 2) , Pass
EN 13773 , Class 1
BS 5867-2 , Type B
DIN 4102 , B1
Übereinstimmung , Pass
UNI VF 8456-8457 , Classe 1
CAN/ULC S109 , Pass
IMO 2010 FTP part 7 , Pass

colorfastness crocking

ISO 105-X12
wet 4-5 (scale 1-5) / dry 4-5 (scale 1-5)
AATCC 8 (solids)
wet 5 (scale 1-5) / dry 5 (scale 1-5)

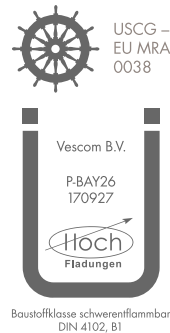
colorfastness to light

ISO 105-B02
5 (scale 1-8)
AATCC 16.2 option 1 or 16.3 opt 3
2.5 (scale 1-5)

seam slippage

ASTM D434
warp 44 lbs / weft 49.5 lbs

labels



care



Shrinkage

Shrinkage 30° - warp -0.9%
Shrinkage 30° - weft -0.6%
Shrinkage 70° - warp -1.5%
Shrinkage 70° - weft -1.2%

Elba

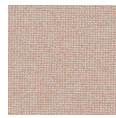
8069.01 - 8069.20



8069.04



8069.05



8069.06



8069.07



8069.08



8069.09



8069.10



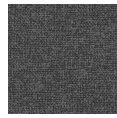
8069.11



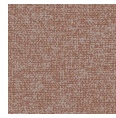
8069.12



8069.13



8069.14



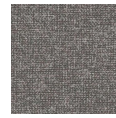
8069.15



8069.16



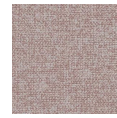
8069.17



8069.18



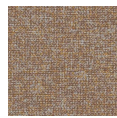
8069.19



8069.20



8069.01



8069.02



8069.03