

Dolin

8048.01 - 8048.09



产品
窗帘

描述
浅色混纺织物

成分
100% 阻燃聚酯纤维

宽幅
± 140 cm, ± 55 inches

重量
± 407 gr/m², ± 13 oz/yd¹

吸声降噪
ISO 354, alpha w
0.85 (pleated)

视觉及热舒适控制
EN 410/EN 14501
Test available

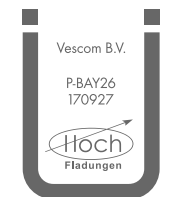
阻燃
NFPA 701 (meth. 1 or 2) , Pass
EN 13773 , Class 1
BS 5867-2 , Type C
NF P 92/503-507 , M1
DIN 4102 , B1
Übereinstimmung , Pass
UNI VF 8456-8457 , Classe 1
CAN/ULC S109 , Pass
IMO 2010 FTP part 7 , Pass

耐摩擦褪色
ISO 105-X12
wet 4-5 (scale 1-5) / dry 4-5 (scale 1-5)
AATCC 8 (solids)
wet 5 (scale 1-5) / dry 5 (scale 1-5)

耐光照褪色
ISO 105-B02
6 (scale 1-8)
AATCC 16.2 option 1 or 16.3 opt 3
5 (scale 1-5)

耐滑缝
ISO 13936-2
warp 5.5 mm / weft 4.7 mm
ASTM D434
warp 32 lbs / weft 30 lbs

标签



Baustoffklasse schwerentflammbar
DIN 4102, B1

保养与维护



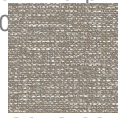
Dolin

8048.01 - 8048.09
Shrinkage 30° - warp -2.8%
Shrinkage 30° - weft -1%

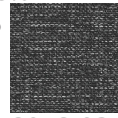
Shrinkage 70° - warp -2.8%



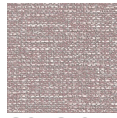
8048.01



8048.02



8048.03



8048.04



8048.05



8048.06



8048.07



8048.08



8048.09