

# Dolin

8048.01 - 8048.09



## Product

**Gordijnstoffen**

## Omschrijving

**Licht gestructureerde melange**

## Samenstelling

**100% brandvertragend polyester**

## Breedte

**± 140 cm, ± 55 inches**

## Gewicht

**± 407 gr/m<sup>2</sup>, ± 13 oz/yd<sup>1</sup>**

## Geluidsabsorptie

**ISO 354, alpha w**

0.85 (pleated)

## Visueel & Thermisch comfort

**EN 410/EN 14501**

Test available

## Brandwerendheid

**NFPA 701 (meth. 1 or 2) , Pass**

**EN 13773 , Class 1**

**BS 5867-2 , Type C**

**NF P 92/503-507 , M1**

**DIN 4102 , B1**

**Übereinstimmung , Pass**

**UNI VF 8456-8457 , Classe 1**

**CAN/ULC S109 , Pass**

**IMO 2010 FTP part 7 , Pass**

## Wrijfechtheid

**ISO 105-X12**

wet 4-5 (scale 1-5) / dry 4-5 (scale 1-5)

**AATCC 8 (solids)**

wet 5 (scale 1-5) / dry 5 (scale 1-5)

## Lichtechtheid

**ISO 105-B02**

6 (scale 1-8)

**AATCC 16.2 option 1 or 16.3 opt 3**

5 (scale 1-5)

## Naadschuifweerstand

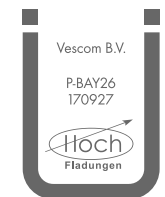
**ISO 13936-2**

warp 5.5 mm / weft 4.7 mm

**ASTM D434**

warp 32 lbs / weft 30 lbs

## Keurmerken



Baustoffklasse schwerentflammbar  
DIN 4102, B1

Reiniging & Onderhoud



# Dolin

8048.01 - 8048.09  
Shrinkage 30° - warp -2.8%  
Shrinkage 30° - weft -1%

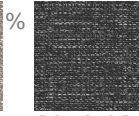
Shrinkage 70° - warp -2.8%



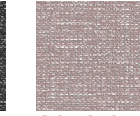
8048.01



8048.02



8048.03



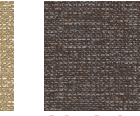
8048.04



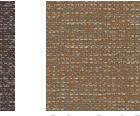
8048.05



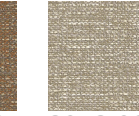
8048.06



8048.07



8048.08



8048.09