

Dolin

8048.01 - 8048.09



Producto

Cortinas

Descripción

Mezcla levemente estructurada

Composición

100% poliéster ignífugo

Anchura

± 140 cm, ± 55 inches

Peso

± 407 gr/m², ± 13 oz/yd¹

Absorción del ruido

ISO 354, alpha w

0.85 (pleated)

Confort Visual & Térmico

EN 410/EN 14501

Test available

Combustión retardada

NFPA 701 (meth. 1 or 2) , Pass

EN 13773 , Class 1

BS 5867-2 , Type C

NF P 92/503-507 , M1

DIN 4102 , B1

Übereinstimmung , Pass

UNI VF 8456-8457 , Classe 1

CAN/ULC S109 , Pass

IMO 2010 FTP part 7 , Pass

Resistencia al frotamiento

ISO 105-X12

wet 4-5 (scale 1-5) / dry 4-5 (scale 1-5)

AATCC 8 (solids)

wet 5 (scale 1-5) / dry 5 (scale 1-5)

Insensibilidad a la luz

ISO 105-B02

6 (scale 1-8)

AATCC 16.2 option 1 or 16.3 opt 3

5 (scale 1-5)

Resistencia al deslizamiento de costuras

ISO 13936-2

warp 5.5 mm / weft 4.7 mm

ASTM D434

warp 32 lbs / weft 30 lbs

Etiquetas

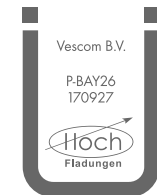


USCG -
EU MRA
0038



STANDARD
100

S07-0023
Hohenstein HTTI



Vescom B.V.

P-BAY26
170927

Baustoffklasse schwerentflammbar
DIN 4102, B1

Cuidado & Mantenimiento



Dolin

8048.01 - 8048.09
Shrinkage 30° - warp -2%
Shrinkage 30° - weft -1%

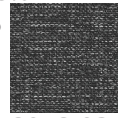
Shrinkage 70° - warp -2.8%



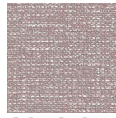
8048.01



8048.02



8048.03



8048.04



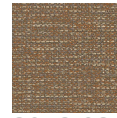
8048.05



8048.06



8048.07



8048.08



8048.09