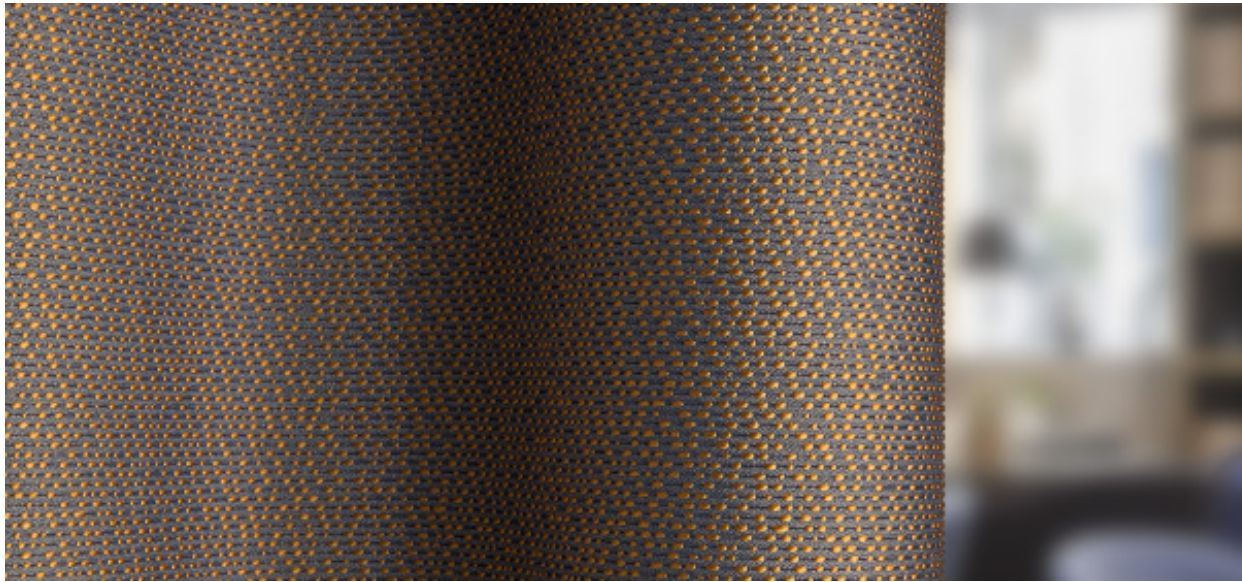


Delos

8082.01 - 8082.24



Product
Curtain

Description
Allover 3D structured weave with a two-tonal coloured, sheen yarn effect

Composition
32% recycled polyester FR / 68% polyester FR

Width
± 136 cm, ± 54 inches

Weight
± 354 gr/m², ± 11 oz/yd¹

Visual & Thermal comfort
EN 410/EN 14501
Test available

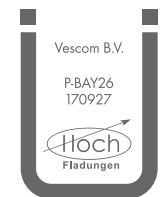
Flame retardancy
NFPA 701 (meth. 1 or 2) , Pass
EN 13773 , Class 1
BS 5867-2 , Type C
NF P 92/503-507 , M1
DIN 4102 , B1
Übereinstimmung , Pass
UNI VF 8456-8457 , Classe 1
CAN/ULC S109 , Pass
IMO 2010 FTP part 7 , Pass

Colorfastness to crocking
ISO 105-X12
wet 4-5 (scale 1-5) / dry 4-5 (scale 1-5)
AATCC 8 (solids)
wet 5 (scale 1-5) / dry 5 (scale 1-5)

Colorfastness to light
ISO 105-B02
6 (scale 1-8)
AATCC 16.2 option 1 or 16.3 opt 3
4.5 (scale 1-5)

Seam slippage
ISO 13936-2
warp 3.6 mm / weft 3.6 mm
ASTM D434
warp 46 lbs / weft 65 lbs

Labels



Baustoffklasse schwerentflammbar
DIN 4102, B1

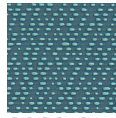
Care & Maintenance



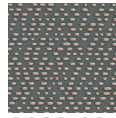
Shrinkage
Shrinkage 70° - warp -2.1%
Shrinkage 70° - weft -1.5%

Delos

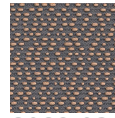
8082.01 - 8082.24



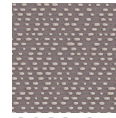
8082.01



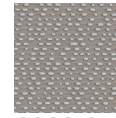
8082.02



8082.03



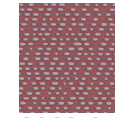
8082.04



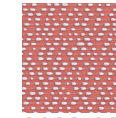
8082.05



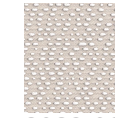
8082.06



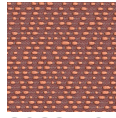
8082.07



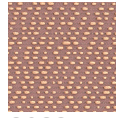
8082.08



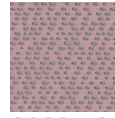
8082.09



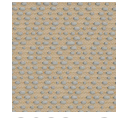
8082.10



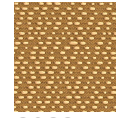
8082.11



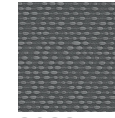
8082.12



8082.13



8082.14



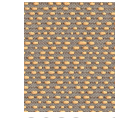
8082.15



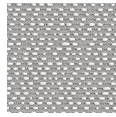
8082.16



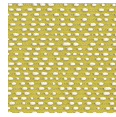
8082.17



8082.18



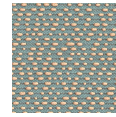
8082.19



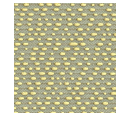
8082.20



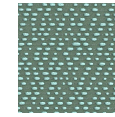
8082.21



8082.22



8082.23



8082.24