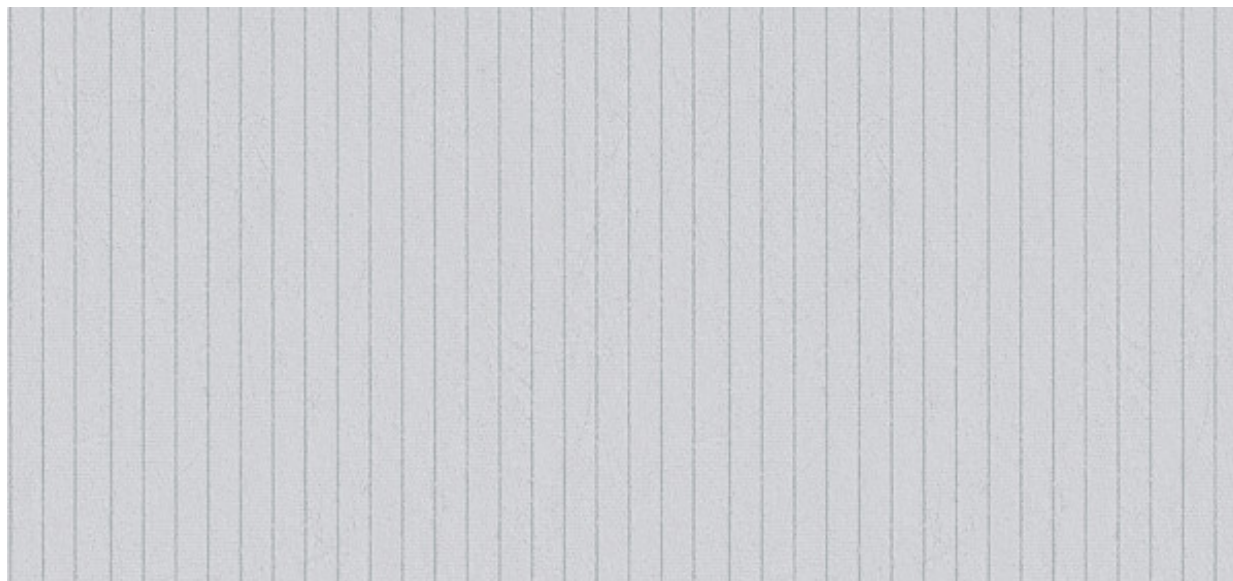


Deauville

2617.00 - 2617.09



Prodotto
Rivestimenti murali

Descrizione
Effetto gessato su base materica

Composizione
70% pasta di legno / 30% poliestere su un supporto in carta

Larghezza
± 137 cm, ± 54 inches

Peso
± 190 gr/m², ± 8 oz/yd¹

Rapporto larghezza
0,7 cm, 0,3 inches

Resistenza al fuoco
**EN 13501 , B, s2 - d0
ASTM E84 , Pass, A**

Etichette



Deauville

2617.00 - 2617.09



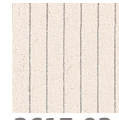
2617.00



2617.01



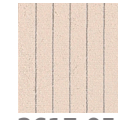
2617.02



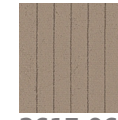
2617.03



2617.04



2617.05



2617.06



2617.07



2617.08



2617.09