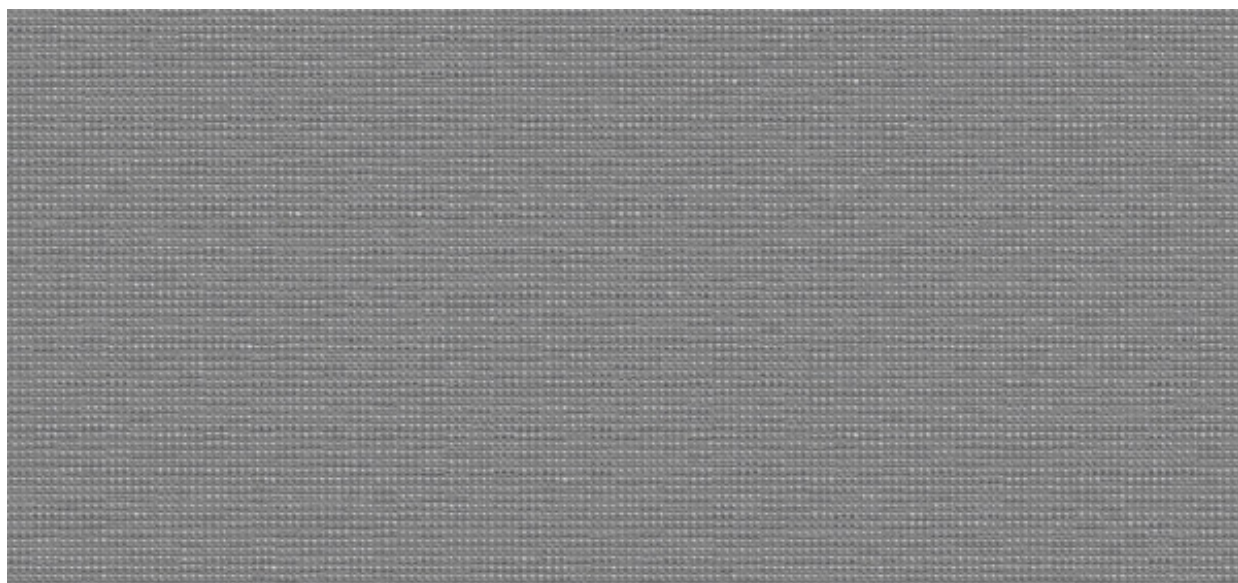


Dash

2533.01 - 2533.18



Produkt

Okleina ścienna

Opis

Półjednorodna wielokolorowa tkanina pleciona

Skład

100% xorel (polietylen) (65% biobased PE, 35% PE)

Szerokość

± 132 cm, ± 52 inches

Gramatura

± 360 gr/m², ± 15 oz/yd¹

Odporność ogniowa

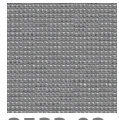
**EN 13501 , B, s1 - d2
ASTM E84 , Pass, A**

Etykiety

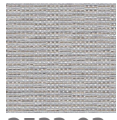


Dash

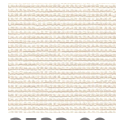
2533.01 - 2533.18



2533.02



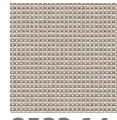
2533.03



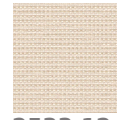
2533.09



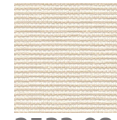
2533.06



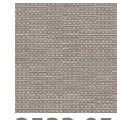
2533.14



2533.12



2533.08



2533.05