

Cyprus

7038.01 - 7038.16



Produto

Revestimento para mobiliário

Descrição

Imagem de tecido bicolor aberto sobre superfície mais escura

Composição

Espuma vinílica, base de malha de algodão/poliéster

Largura

± 137-140 cm, ± 54-55 inches

Peso

± 800 gr/m², ± 36 oz/yd¹

Resistência ao fogo

EN 1021/1-2 , Pass

BS 5852 , Crib 5

NF P 92/503-507 or NF D 60-013 , M2

DIN 4102 , B2

Cal TB 117-2013, section 1 , Pass

IMO 2010 FTP part 8 , Pass

NFPA 260 , Class 1

Resistência à fricção

ISO 105 X12

wet 5 (scale 1-5) / dry 5 (scale 1-5)

AATCC 8

wet 5 (scale 1-5) / dry 5 (scale 1-5)

Resistência à luz

ISO 105 B02

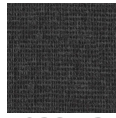
7 (scale 1-8)

Marcas de qualidade

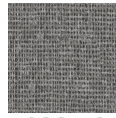


Cyprus

7038.01 - 7038.16



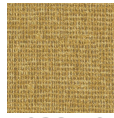
7038.13



7038.12



7038.11



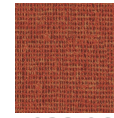
7038.10



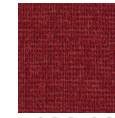
7038.04



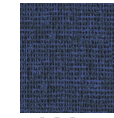
7038.03



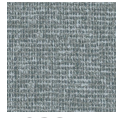
7038.06



7038.08



7038.15



7038.14



7038.16



7038.02



7038.05



7038.07



7038.01



7038.09