

# Cyprus

7038.01 - 7038.16



## Product

### Upholstery

## Description

**Image of a 2-coloured open weave on a darker surface**

## Composition

**Vinyl coat, cotton/polyester backing**

## Width

**± 137-140 cm, ± 54-55 inches**

## Weight

**± 800 gr/m<sup>2</sup>, ± 36 oz/yd<sup>2</sup>**

## Flame retardancy

**EN 1021/1-2 , Pass**

**BS 5852 , Crib 5**

**NF P 92/503-507 or NF D 60-013 , M2**

**DIN 4102 , B2**

**Cal TB 117-2013, section 1 , Pass**

**IMO 2010 FTP part 8 , Pass**

**NFPA 260 , Class 1**

## Colorfastness to crocking

### ISO 105 X12

wet 5 (scale 1-5) / dry 5 (scale 1-5)

### AATCC 8

wet 5 (scale 1-5) / dry 5 (scale 1-5)

## Colorfastness to light

### ISO 105 B02

7 (scale 1-8)

## Labels



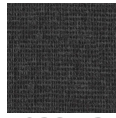
USCG -  
EU MRA  
0038



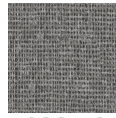
# Cyprus

7038.01 - 7038.16

---



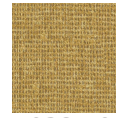
7038.13



7038.12



7038.11



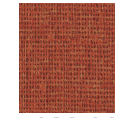
7038.10



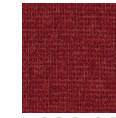
7038.04



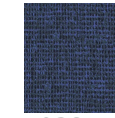
7038.03



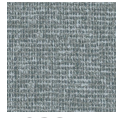
7038.06



7038.08



7038.15



7038.14



7038.16



7038.02



7038.05



7038.07



7038.01



7038.09