

# Creek

7053.01 - 7053.22



## Produto

**Revestimento para mobiliário**

## Descrição

**Aparência de linho tricolor irregular**

## Composição

**Espuma vinílica, base de malha de algodão/poliéster**

## Largura

**± 137-140 cm, ± 54-55 inches**

## Peso

**± gr/m<sup>2</sup>, ± 36 oz/yd<sup>1</sup>**

## Resistência ao fogo

**EN 1021/1-2 , Pass**

**BS 5852 , Crib 5**

**NF P 92/503-507 or NF D 60-013 , M2**

**DIN 4102 , B2**

**Cal TB 117-2013, section 1 , Pass**

**IMO 2010 FTP part 8 , Pass**

**NFPA 260 , Class 1**

## Resistência à fricção

**ISO 105 X12**

wet 5 (scale 1-5) / dry 5 (scale 1-5)

**AATCC 8**

wet 5 (scale 1-5) / dry 5 (scale 1-5)

## Resistência à luz

**ISO 105 B02**

7 (scale 1-8)

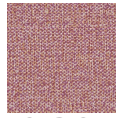
## Marcas de qualidade



# Creek

7053.01 - 7053.22

---



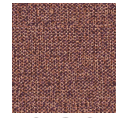
7053.01



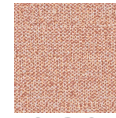
7053.02



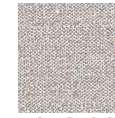
7053.03



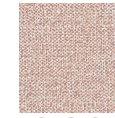
7053.04



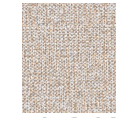
7053.05



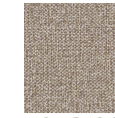
7053.06



7053.07



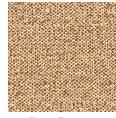
7053.08



7053.09



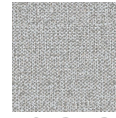
7053.10



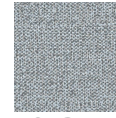
7053.11



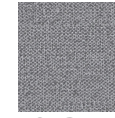
7053.12



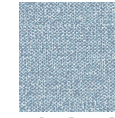
7053.13



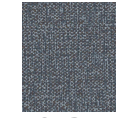
7053.14



7053.15



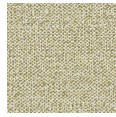
7053.16



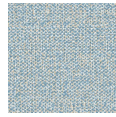
7053.17



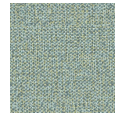
7053.18



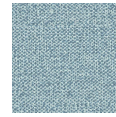
7053.19



7053.20



7053.21



7053.22