

Creek

7053.01 - 7053.22



Product

Upholstery

Description

Three-tone irregular linen look

Composition

Vinyl coat, cotton/polyester backing

Width

± 137-140 cm, ± 54-55 inches

Weight

± 800 gr/m², ± 36 oz/yd¹

Flame retardancy

EN 1021/1-2 , Pass

BS 5852 , Crib 5

NF P 92/503-507 or NF D 60-013 , M2

DIN 4102 , B2

Cal TB 117-2013, section 1 , Pass

IMO 2010 FTP part 8 , Pass

NFPA 260 , Class 1

Colorfastness to crocking

ISO 105 X12

wet 5 (scale 1-5) / dry 5 (scale 1-5)

AATCC 8

wet 5 (scale 1-5) / dry 5 (scale 1-5)

Colorfastness to light

ISO 105 B02

7 (scale 1-8)

Labels

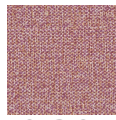


USCG –
EU MRA
0038



Creek

7053.01 - 7053.22



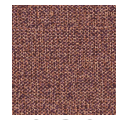
7053.01



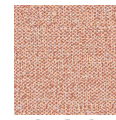
7053.02



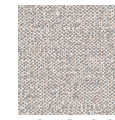
7053.03



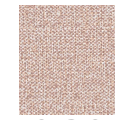
7053.04



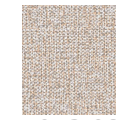
7053.05



7053.06



7053.07



7053.08



7053.09



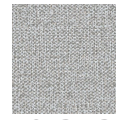
7053.10



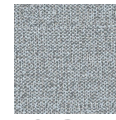
7053.11



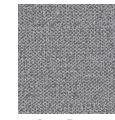
7053.12



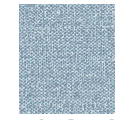
7053.13



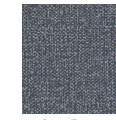
7053.14



7053.15



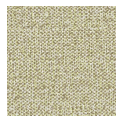
7053.16



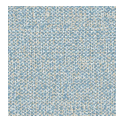
7053.17



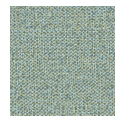
7053.18



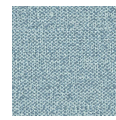
7053.19



7053.20



7053.21



7053.22