

# Corsica

8055.01 - 8055.12



产品  
窗帘

描述  
亚麻外观，半透明吸音窗帘面料

成分  
100% 阻燃聚酯纤维

宽幅  
± 305 cm, ± 120 inches

重量  
± 323 gr/m<sup>2</sup>, ± 10 oz/yd<sup>1</sup>

吸声降噪  
ISO 354, alpha w  
0.65 (pleated)  
ASTM C423, nrc  
0.65

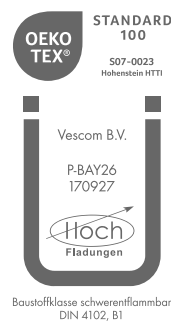
视觉及热舒适控制  
EN 410/EN 14501  
Test available

阻燃  
NFPA 701 (meth. 1 or 2) , Pass  
EN 13773 , Class 1  
BS 5867-2 , Type C  
NF P 92/503-507 , M1  
DIN 4102 , B1  
Übereinstimmung , Pass  
UNI VF 8456-8457 , Classe 1  
CAN/ULC S109 , Pass

耐摩擦褪色  
ISO 105-X12  
wet 4-5 (scale 1-5) / dry 4-5 (scale 1-5)  
AATCC 8 (solids)  
wet 5 (scale 1-5) / dry 5 (scale 1-5)

耐光照褪色  
ISO 105-B02  
6 (scale 1-8)  
AATCC 16.2 option 1 or 16.3 opt 3  
5 (scale 1-5)

标签



保养与维护



收缩率  
Shrinkage 30° warp -0.5% / weft -0.7%  
Shrinkage 70° warp -0.7% / weft -1%

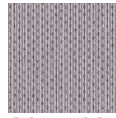
# Corsica

8055.01 - 8055.12

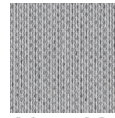
---



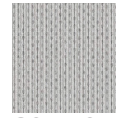
8055.01



8055.02



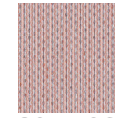
8055.03



8055.04



8055.05



8055.06



8055.07



8055.08



8055.09



8055.10



8055.11



8055.12