

# Chambord

2617.80 - 2617.89



Produto

**Revestimento mural**

Peso

**± 219 gr/m<sup>2</sup>, ± 10 oz/yd<sup>1</sup>**

Descrição

**Aparência de betão com brilho metálico**

Resistência ao fogo

**EN 13501 , B, s2 - d0**

**ASTM E84 , Pass, A**

Composição

**70% popa de madeira / 30% poliéster sobre um suporte em papel**

Marcas de qualidade

Largura

**± 137 cm, ± 54 inches**



# Chambord

2617.80 - 2617.89

---



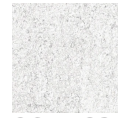
2617.80



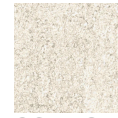
2617.81



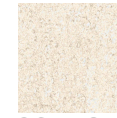
2617.82



2617.83



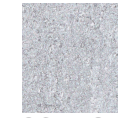
2617.84



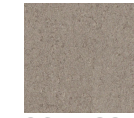
2617.85



2617.86



2617.87



2617.88



2617.89