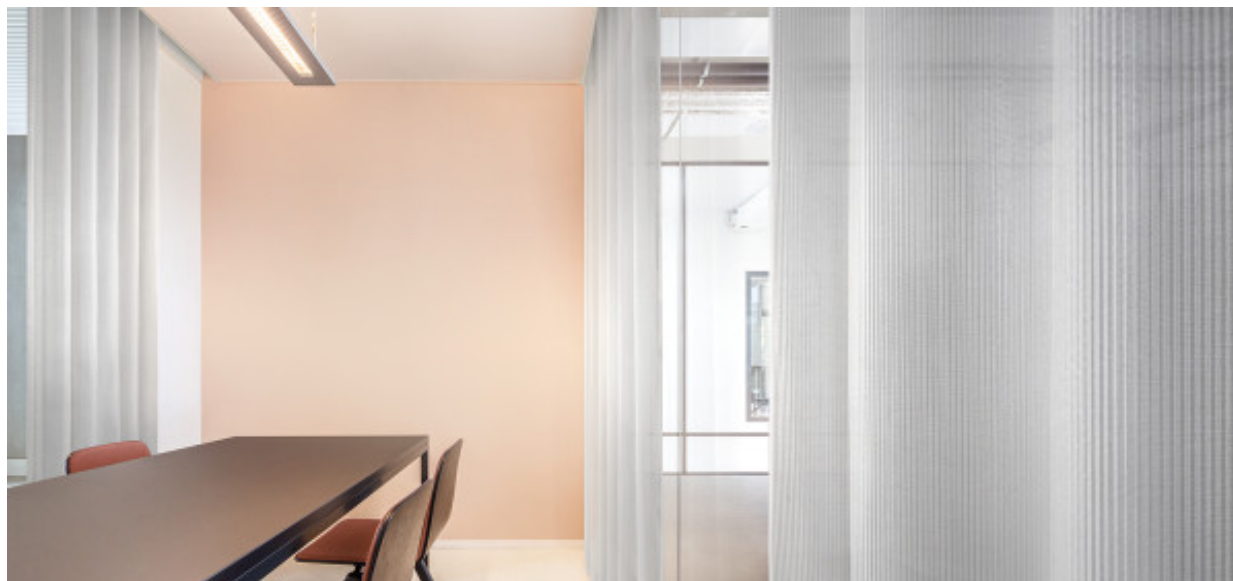


# Carmen

8024.01 - 8024.09



## Product

### Gordijnstoffen

## Omschrijving

**3-dimensionale lengte ribbel met de schittering van smeltend ijs**

## Samenstelling

**100% brandvertragend polyester**

## Breedte

**± 150 cm, ± 59 inches**

## Gewicht

**± 136 gr/m<sup>2</sup>, ± 4 oz/yd<sup>1</sup>**

## Geluidsabsorptie

**ISO 354, alpha w**

0.50 (pleated)

**ASTM C423, nrc**

0.30

## Visueel & Thermisch comfort

**EN 410/EN 14501**

Test available

## Brandwerendheid

**NFPA 701 (meth. 1 or 2) , Pass**

**EN 13773 , Class 1**

**BS 5867-2 , Type C**

**NF P 92/503-507 , M1**

**DIN 4102 , B1**

**Übereinstimmung , Pass**

**UNI VF 8456-8457 , Classe 1**

**CAN/ULC S109 , Pass**

**IMO 2010 FTP part 7 , Pass**

## Wrijfechtheid

**ISO 105-X12**

wet 4-5 (scale 1-5) / dry 4-5 (scale 1-5)

**AATCC 8 (solids)**

wet 5 (scale 1-5) / dry 5 (scale 1-5)

## Lichtechtheid

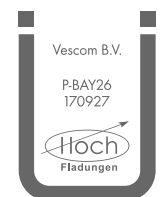
**ISO 105-B02**

5 (scale 1-8)

**AATCC 16.2 option 1 or 16.3 opt 3**

4 (scale 1-5)

## Keurmerken



Baustoffklasse schwerentflammbar  
DIN 4102, B1

## Reiniging & Onderhoud



## Krimp

Shrinkage 30° - warp -0.3%

Shrinkage 30° - weft -0.3%

Shrinkage 70° - warp -0.6%

Shrinkage 70° - weft -0.4%

# Carmen

8024.01 - 8024.09

---



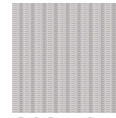
8024.01



8024.02



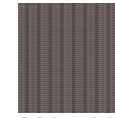
8024.03



8024.04



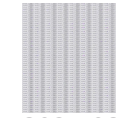
8024.05



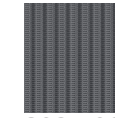
8024.06



8024.07



8024.08



8024.09