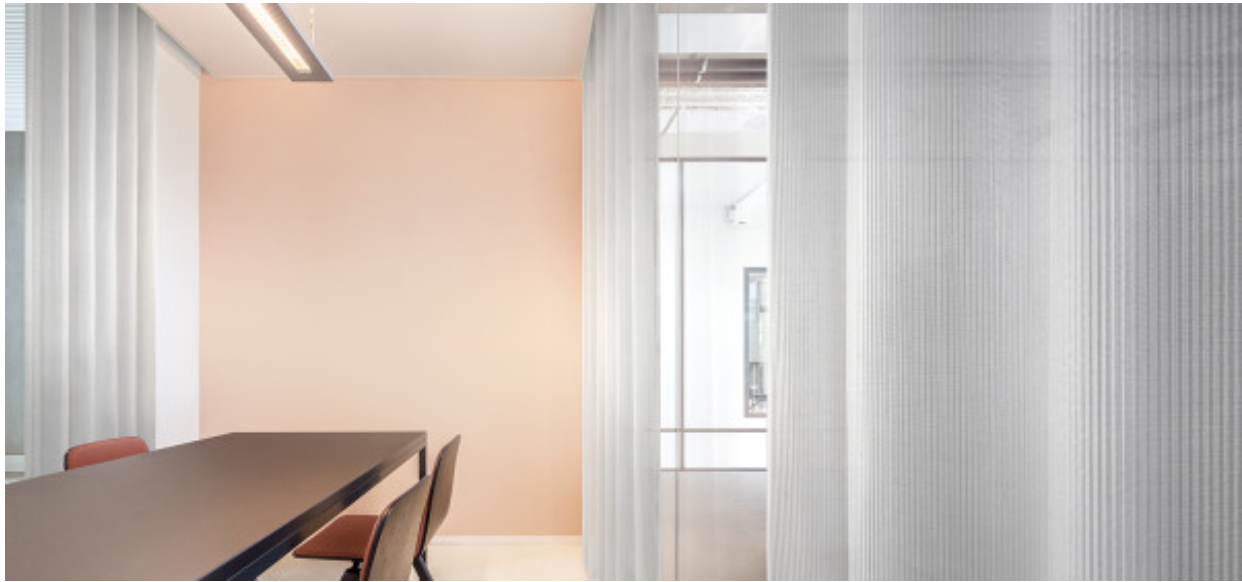


Carmen

8024.01 - 8024.09



Produit

Tissus pour rideaux

Description

Nervure longitudinale tridimensionnelle avec l'éclat de la glace fondante

Composition

100% polyester ignifuge

Largeur

± 150 cm, ± 59 inches

Poids

± 136 gr/m, ± 4 oz/yd¹

Absorption acoustique

ISO 354, alpha w

0.50 (pleated)

ASTM C423, nrc

0.30

Confort Visuel & Thermique

EN 410/EN 14501

Test available

Non feu

NFPA 701 (meth. 1 or 2) , Pass

EN 13773 , Class 1

BS 5867-2 , Type C

NF P 92/503-507 , M1

DIN 4102 , B1

Übereinstimmung , Pass

UNI VF 8456-8457 , Classe 1

CAN/ULC S109 , Pass

IMO 2010 FTP part 7 , Pass

Résistance au frottement

ISO 105-X12

wet 4-5 (scale 1-5) / dry 4-5 (scale 1-5)

AATCC 8 (solids)

wet 5 (scale 1-5) / dry 5 (scale 1-5)

Solidité lumière

ISO 105-B02

5 (scale 1-8)

AATCC 16.2 option 1 or 16.3 opt 3

4 (scale 1-5)

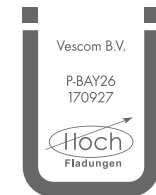
Étiquettes



USCG -
EU MRA
0038



STANDARD
100
507-0023
Hohenstein HTTI



Vescom B.V.

P.BAY26
170927

Baustoffklasse schwerentflammbar
DIN 4102, B1

Entretien & Maintenance



Rétrécissement

Shrinkage 30° warp -0.3% / weft -0.3%

Shrinkage 70° warp -0.6% / weft -0.4%

Carmen

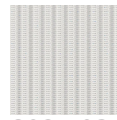
8024.01 - 8024.09



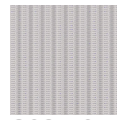
8024.01



8024.02



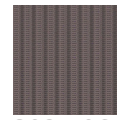
8024.03



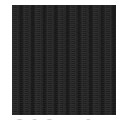
8024.04



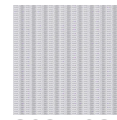
8024.05



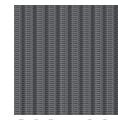
8024.06



8024.07



8024.08



8024.09