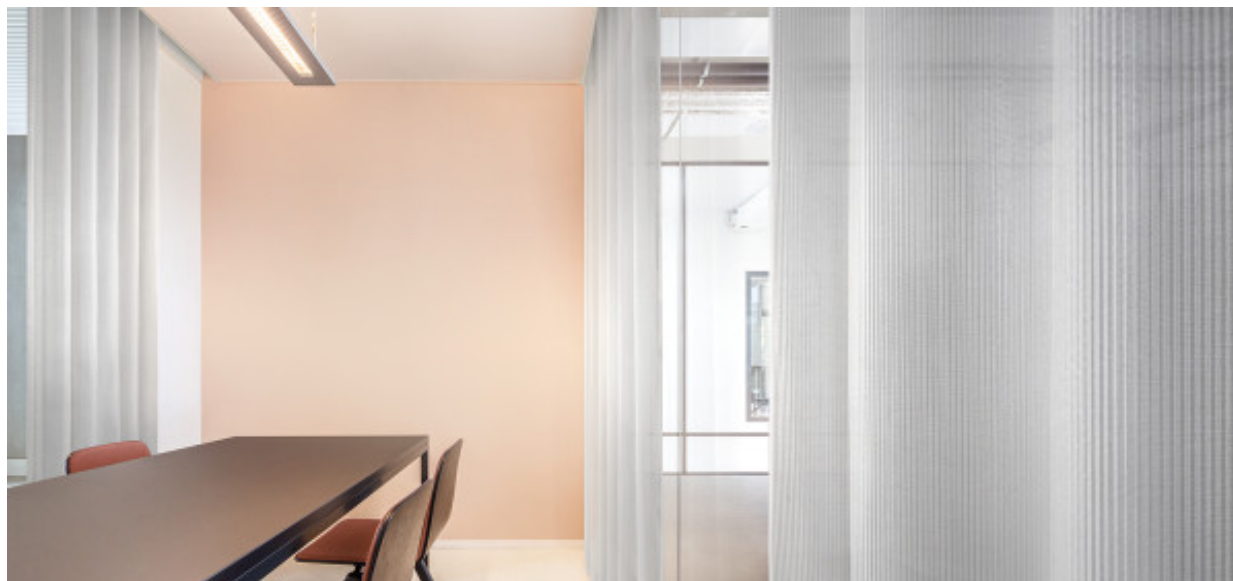


Carmen

8024.01 - 8024.09



Product
Curtain

Description
3-dimensional rib lengthwise with the brilliance of melting ice

Composition
100% flame retardant polyester

Width
± 150 cm, ± 59 inches

Weight
± 136 gr/m², ± 4 oz/yd¹

Sound absorption
ISO 354, alpha w
0.50 (pleated)
ASTM C423, nrc
0.30

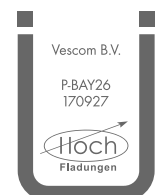
Visual & Thermal comfort
EN 410/EN 14501
Test available

Flame retardancy
NFPA 701 (meth. 1 or 2) , Pass
EN 13773 , Class 1
BS 5867-2 , Type C
NF P 92/503-507 , M1
DIN 4102 , B1
Übereinstimmung , Pass
UNI VF 8456-8457 , Classe 1
CAN/ULC S109 , Pass
IMO 2010 FTP part 7 , Pass

Colorfastness to crocking
ISO 105-X12
wet 4-5 (scale 1-5) / dry 4-5 (scale 1-5)
AATCC 8 (solids)
wet 5 (scale 1-5) / dry 5 (scale 1-5)

Colorfastness to light
ISO 105-B02
5 (scale 1-8)
AATCC 16.2 option 1 or 16.3 opt 3
4 (scale 1-5)

Labels



Baustoffklasse schwerentflammbar
DIN 4102, B1

Care & Maintenance



Shrinkage
Shrinkage 30° - warp -0.3%
Shrinkage 30° - weft -0.3%
Shrinkage 70° - warp -0.6%
Shrinkage 70° - weft -0.4%

Carmen

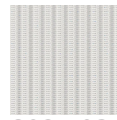
8024.01 - 8024.09



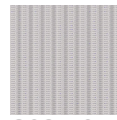
8024.01



8024.02



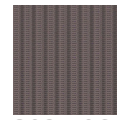
8024.03



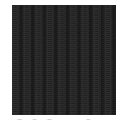
8024.04



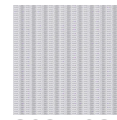
8024.05



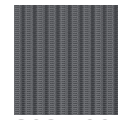
8024.06



8024.07



8024.08



8024.09