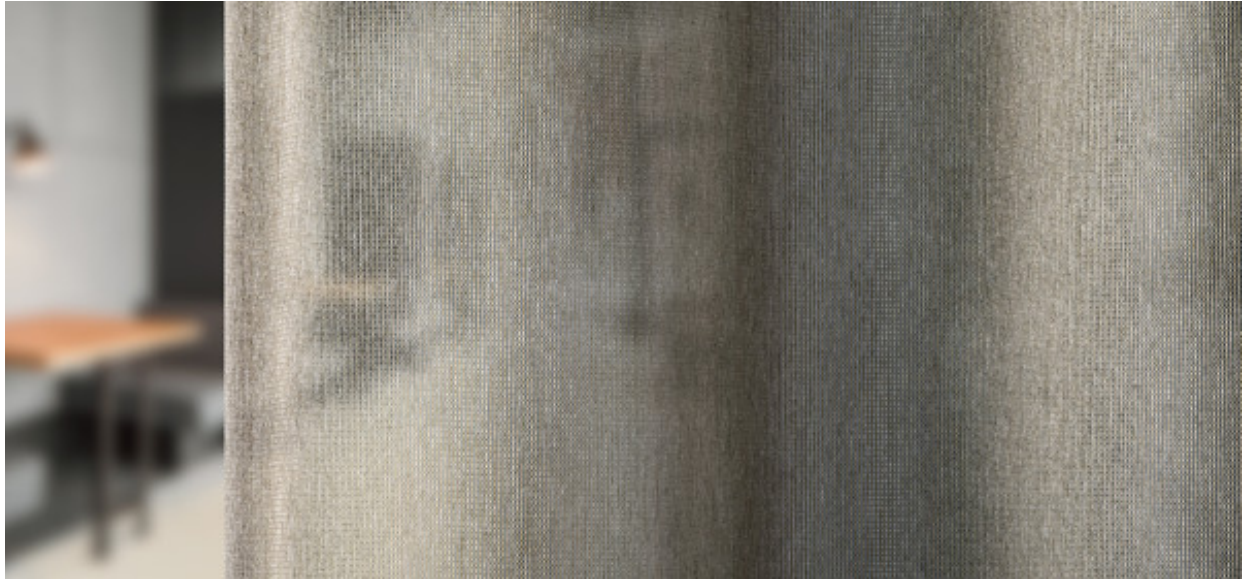


Capri

8056.01 - 8056.12



产品
窗帘

描述
素色的，半透明吸音窗帘面料

成分
100% 阻燃聚酯纤维

宽幅
± 306 cm, ± 120 inches

重量
± 303 gr/m², ± 10 oz/yd¹

吸声降噪
ISO 354, alpha w
0.65 (pleated)
ASTM C423, nrc
0.70

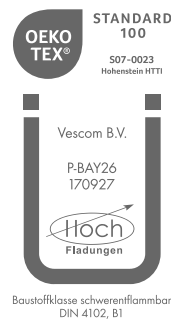
视觉及热舒适控制
EN 410/EN 14501
Test available

阻燃
NFPA 701 (meth. 1 or 2) , Pass
EN 13773 , Class 1
BS 5867-2 , Type C
NF P 92/503-507 , M1
DIN 4102 , B1
Übereinstimmung , Pass
UNI VF 8456-8457 , Classe 1
CAN/ULC S109 , Pass

耐摩擦褪色
ISO 105-X12
wet 4-5 (scale 1-5) / dry 4-5 (scale 1-5)
AATCC 8 (solids)
wet 5 (scale 1-5) / dry 5 (scale 1-5)

耐光照褪色
ISO 105-B02
6 (scale 1-8)
AATCC 16.2 option 1 or 16.3 opt 3
4-5 (scale 1-5)

标签



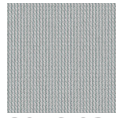
保养与维护



收缩率
Shrinkage 30° warp 0% / weft -0.6%
Shrinkage 70° warp -0.6% / weft -1.2%

Capri

8056.01 - 8056.12



8056.03



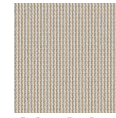
8056.01



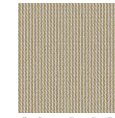
8056.02



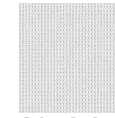
8056.04



8056.05



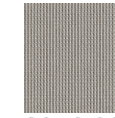
8056.06



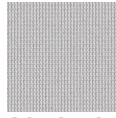
8056.07



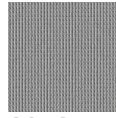
8056.08



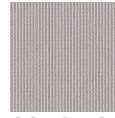
8056.09



8056.10



8056.11



8056.12