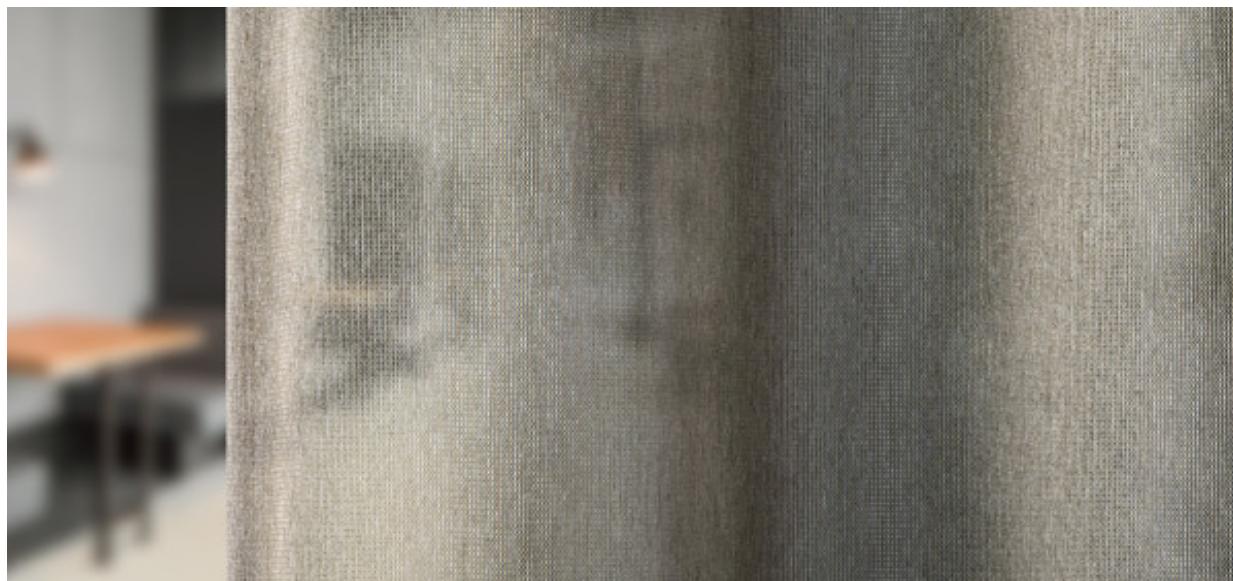


# Capri

8056.01 - 8056.12



## Produkt

**Tkaniny zasłonowe**

## Opis

**Uniwersalna ,gładka, częściowo przezierna tkanina zasłonowa**

## Skład

**100% poliester ognioodporny**

## Szerokość

**± 306 cm, ± 120 inches**

## Gramatura

**± 303 gr/m, ± 10 oz/yd<sup>1</sup>**

## Współczynnik pochłaniania dźwięku

**ISO 354, alpha w**

0.65 (pleated)

**ASTM C423, nrc**

0.70

## Komfort Wizualny & Termiczny

**EN 410/EN 14501**

Test available

## Odporność ognia

**NFPA 701 (meth. 1 or 2) , Pass**

**EN 13773 , Class 1**

**BS 5867-2 , Type C**

**NF P 92/503-507 , M1**

**DIN 4102 , B1**

**Übereinstimmung , Pass**

**UNI VF 8456-8457 , Classe 1**

**CAN/ULC S109 , Pass**

## Odporność na wycieranie

**ISO 105-X12**

wet 4-5 (scale 1-5) / dry 4-5 (scale 1-5)

**AATCC 8 (solids)**

wet 5 (scale 1-5) / dry 5 (scale 1-5)

## Odporność na działanie światła

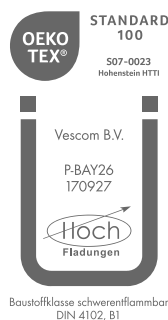
**ISO 105-B02**

6 (scale 1-8)

**AATCC 16.2 option 1 or 16.3 opt 3**

4-5 (scale 1-5)

## Etykiety



## Pielęgnacja & Konserwacja



## Kurczliwość

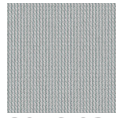
Shrinkage 30° warp 0% / weft -0.6%

Shrinkage 70° warp -0.6% / weft -1.2%

# Capri

8056.01 - 8056.12

---



8056.03



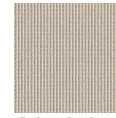
8056.01



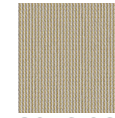
8056.02



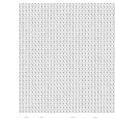
8056.04



8056.05



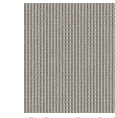
8056.06



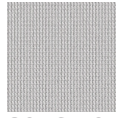
8056.07



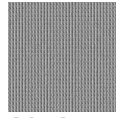
8056.08



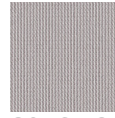
8056.09



8056.10



8056.11



8056.12