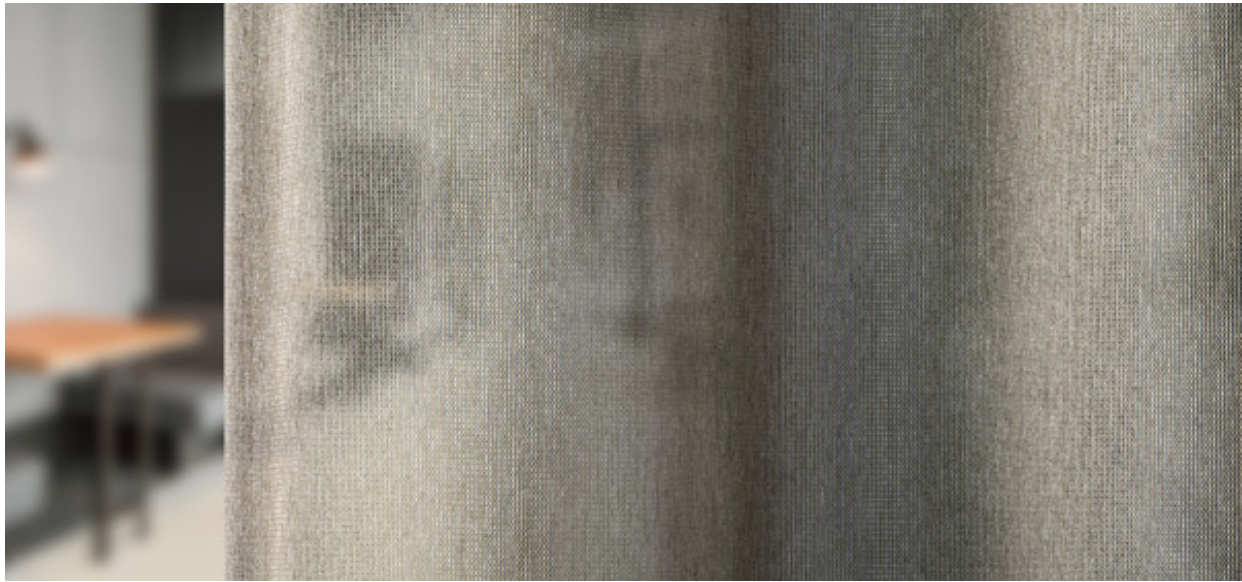


# Capri

8056.01 - 8056.12



**Product**  
**Curtain**

**Description**  
**Unpatterned, uni half transparent acoustic curtain fabric**

**Composition**  
**100% flame retardant polyester**

**Width**  
**± 306 cm, ± 120 inches**

**Weight**  
**± 303 gr/m<sup>2</sup>, ± 10 oz/yd<sup>1</sup>**

**Sound absorption**  
**ISO 354, alpha w**  
0.65 (pleated)  
**ASTM C423, nrc**  
0.70

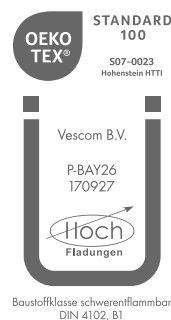
**Visual & Thermal comfort**  
**EN 410/EN 14501**  
Test available

**Flame retardancy**  
**NFPA 701 (meth. 1 or 2) , Pass**  
**EN 13773 , Class 1**  
**BS 5867-2 , Type C**  
**NF P 92/503-507 , M1**  
**DIN 4102 , B1**  
**Übereinstimmung , Pass**  
**UNI VF 8456-8457 , Classe 1**  
**CAN/ULC S109 , Pass**

**Colorfastness to crocking**  
**ISO 105-X12**  
wet 4-5 (scale 1-5) / dry 4-5 (scale 1-5)  
**AATCC 8 (solids)**  
wet 5 (scale 1-5) / dry 5 (scale 1-5)

**Colorfastness to light**  
**ISO 105-B02**  
6 (scale 1-8)  
**AATCC 16.2 option 1 or 16.3 opt 3**  
4-5 (scale 1-5)

**Labels**



**Care & Maintenance**

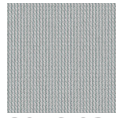


**Shrinkage**  
Shrinkage 30° - warp 0%  
Shrinkage 30° - weft -0.6%  
Shrinkage 70° - warp -0.6%  
Shrinkage 70° - weft -1.2%

# Capri

8056.01 - 8056.12

---



8056.03



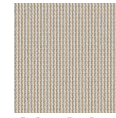
8056.01



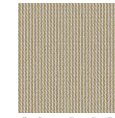
8056.02



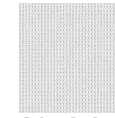
8056.04



8056.05



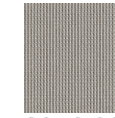
8056.06



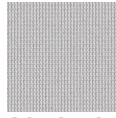
8056.07



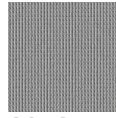
8056.08



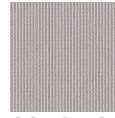
8056.09



8056.10



8056.11



8056.12