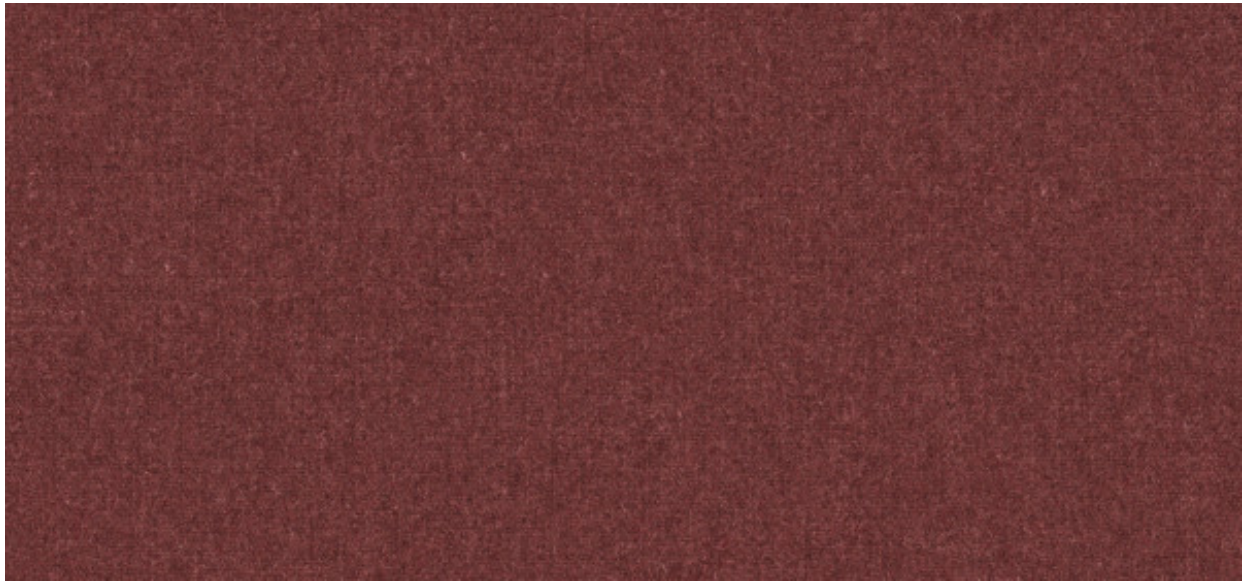


# Bradford

2614.30 - 2614.39



Prodotto

**Rivestimenti murali**

Descrizione

**Tweed di lana**

Composizione

**65% lana / 35% poliestere su un supporto in carta**

Larghezza

**± 137 cm, ± 54 inches**

Peso

**± 380 gr/m<sup>2</sup>, ± 17 oz/yd<sup>1</sup>**

Resistenza al fuoco

**EN 13501 , C, s2 - d0  
ASTM E84 , Pass, A**

Etichette



# Bradford

2614.30 - 2614.39

---



2614.38



2614.30



2614.37



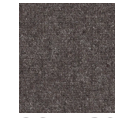
2614.34



2614.36



2614.33



2614.39



2614.35



2614.32



2614.31