

Boyd

1067.01 - 1067.21



Produto

Revestimento mural

Descrição

Estrutura marcante “tipo ladrilho”

Composição

Camada vinílica estampada com tintas à base de água e base de algodão

Largura

± 130 cm, ± 51 inches

Peso

± 800 gr/m², ± 34 oz/yd¹

Resistência ao fogo

EN 13501 , B, s2 - d0

ASTM E84 , Pass, A

NFPA 286 , Pass

Marcas de qualidade



vinyl ^{plus}
COMMITTED TO SUSTAINABLE DEVELOPMENT

CE EN 15102

Boyd

1067.01 - 1067.21



1067.01



1067.02



1067.03



1067.04



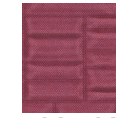
1067.05



1067.06



1067.07



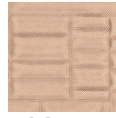
1067.08



1067.09



1067.10



1067.11



1067.12



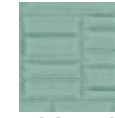
1067.13



1067.14



1067.15



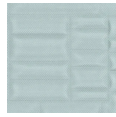
1067.16



1067.17



1067.18



1067.19



1067.20



1067.21