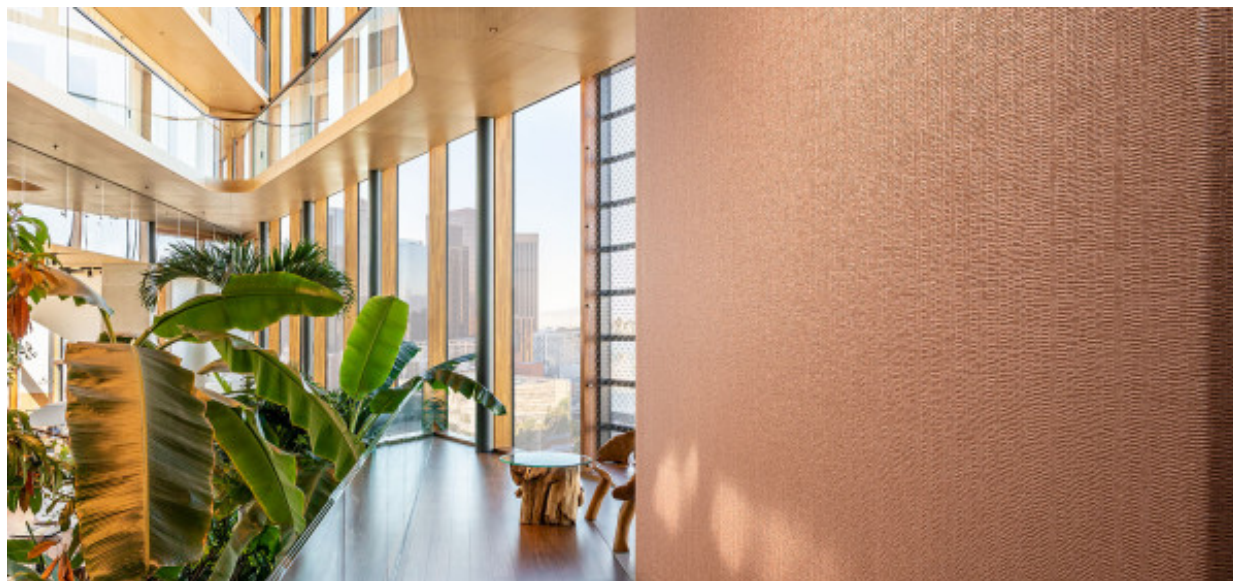


Barkley

1102.01 - 1102.24



Prodotto

Rivestimenti murali

Descrizione

Texture corteccia in colori naturali

Composizione

Tessuto in puro cotone con spalmatura di monomeri vinilici completamente polimerizzati, stampato con inchiostri a base acquosa

Larghezza

± 130 cm, ± 51 inches

Peso

± 440 gr/m², ± 18 oz/yd¹

Assorbimento del suono

ISO 354, alpha w

0.10

Resistenza al fuoco

EN 13501 , B, s2 - d0

ASTM E84 , Pass, A

NFPA 286 , Pass

Resistenza alla luce

ISO 105-B02

8 (scale 1-8)

Etichette

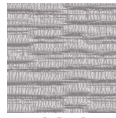


vinyl ^{plus}
COMMITTED TO
SUSTAINABLE DEVELOPMENT

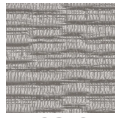
CE EN 15102

Barkley

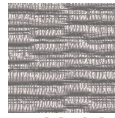
1102.01 - 1102.24



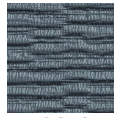
1102.04



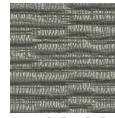
1102.05



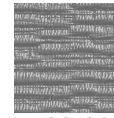
1102.06



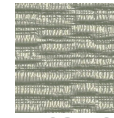
1102.07



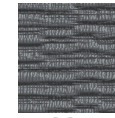
1102.08



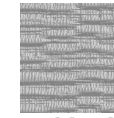
1102.09



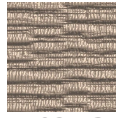
1102.10



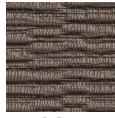
1102.11



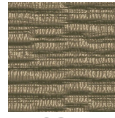
1102.12



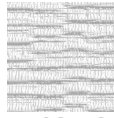
1102.13



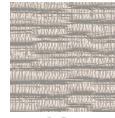
1102.14



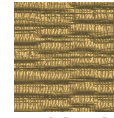
1102.15



1102.16



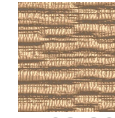
1102.17



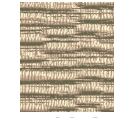
1102.18



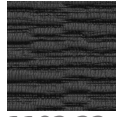
1102.19



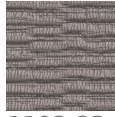
1102.20



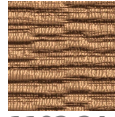
1102.21



1102.22



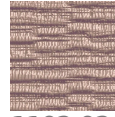
1102.23



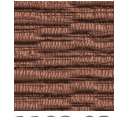
1102.24



1102.01



1102.02



1102.03